



EUROPEAN CENTRAL BANK

EUROSYSTEM

Working Paper Series

Matteo Ciccarelli, Fulvia Marotta

Demand or supply? An empirical exploration of the effects of climate change on the macroeconomy

No 2608 / October 2021

Abstract

The macroeconomic effects of climate-related events and climate policies depend on the interaction between demand- and supply-type of shocks that those events and policies imply. Using a panel of 24 OECD countries for the sample 1990-2019 and a standard macroeconomic framework, the paper tests the combined effect of (1) climate change, (2) environmental policies and (3) environment-related technologies on the macroeconomy. Results show that climate change and policies to counteract them have a significant, albeit not sizeable, macroeconomic effects over the business cycle. We find evidence that physical risks work as negative demand shocks while transition policies or technology improvements resemble downward supply movements. Furthermore, the disruptive effects on the economy are exacerbated for countries without carbon tax or with a high exposure to natural disasters. Overall our results support the need for a uniform policy mix to counteract climate change with a balance between demand-pull and technology-push policies.

JEL Classification: C11, C33, E32, E58, Q5

Keywords: Environmental policy, Environment-related technologies, Physical risks, Business cycle, SVAR

Non-technical summary

Global climate change has already had measurable effects on the environment and many of the effects that scientists had predicted in the past are now occurring: loss of sea ice, accelerated sea level rise, and longer, more intense heat waves, among others. As a result, and according to the published evidence, the net damage costs of climate change are likely to be significant and to increase over time. The severity of the climate change's direct effects (such as rising sea levels and more frequent and severe natural disasters) as well as the transition to a net-zero economy (through changes in government climate policy, technology, and consumer preferences), has the potential to generate financial risks and economic consequences, involving unprecedented structural changes to our economies, countries and sectors. Therefore, when it comes to understanding the impact of climate change on the economic activity it is important to distinguish between the impacts of what the literature identifies as physical and transition risks. Both types of risks (or shocks) affect the economy from both the supply and demand side through many channels. As such, climate change is relevant to the central banks' mission to maintaining monetary and financial stability. For this reason, with the aim to shed light on the macroeconomic effects of climate change and the efforts to counteract them, we estimate a Panel-VAR with 24 countries over the sample 1990-2019. We identify four climate shocks: on the one side, the direct effects of climate change proxied by greenhouse gas emissions and environmental degradation (physical risks) and, on the other side, environmental policy and environment-related technology shocks (transition risks). The paper shows that climate changes and policies to counteract them have a significant, albeit not sizeable, effect on the macroeconomy over an horizon between 2 and 8 years. In particular, the data of this analysis robustly support the view that the impact on output and prices of physical risks is overall negative whereas the final impact of policies and technology is positive on prices and negative on output. Therefore, physical risks are associated with demand-type of shocks while transition policies and technological improvement are more consistent with supply adjustments. Results also differ according to specific country institutional and economic characteristics as well as their different degrees of exposure to risks and vulnerabilities. Overall we find evidence that green technological development that is not supported by the right policy mix may result in market failures that have different sizes for different countries with heterogeneous consequences on the phases and duration of their respective cycles. A coordinated approach on climate policies would therefore

be essential for instance in a monetary union with common monetary and financial objectives. Climate change and the transition towards a more sustainable economy can affect price and financial stability through their impact on macroeconomic indicators, becoming a “threat” to business cycle synchronization among union members and, therefore, an additional constraint for the central bank’s monetary policy strategy.

1 Introduction

The rise in human and economic activity since the industrial revolution – and the subsequent increase in carbon and other greenhouse gas (GHG) emissions, deforestation and air pollution – has already had a substantial and quantifiable impact on our planet’s climate. In 2019 alone, the global temperature increase and natural disasters caused at least \$100 billion in damages.¹ Scientists of the Intergovernmental Panel on Climate Change (IPCC) estimate that global temperatures have risen by around 1°C since 1850 and could exceed 4°C by the end of this century if no action to limit emissions is taken (IPCC (2018)). Under this assumption climate change will continue to adversely affect ecosystems, water resources, food production, human settlements and the frequency and magnitude of extreme natural events resulting in great risks for our economy and financial system. To stop all of this from happening, in 2015 countries signed up to the Paris Agreement, with the primary goal to keep the average global temperature rise this century well below 2°C above pre-industrial levels. Achieving this target, though, will require large scale reductions in GHG emissions globally reaching net-zero emissions by 2050 (IPCC (2014)).

The severity of the climate change’s direct effects (such as rising sea levels and more frequent severe natural disasters) as well as the transition to a net-zero economy (through changes in government climate policy, technology and consumer preferences), will generate financial risks and economic consequences, involving unprecedented structural changes to our economies, countries and sectors. Therefore, when it comes to understanding the impact of climate change on the economic activity it is important to distinguish between the impacts of what the literature identifies as physical and transition risks. Both types of risks (or shocks) affect the economy from both the supply and demand side through many channels.

As such, climate change is relevant to the central banks’ mission to maintaining monetary and financial stability. From a central bank perspective this implies that researchers need to investigate two fundamental aspects: first of all, we need to provide evidence that these effects materialize over a horizon that is relevant for monetary policy. Once this is supported, then modelling the interaction between climate change and the economy requires empirically validated assumptions (NGFS (2020b), McKibbin et al. (2021)). This paper tries to shed light on these issues by answering three main questions: Are the economic effects of climate-related shocks significant enough over the business cycle (2 to 8 years horizon)? Do climate change and efforts

¹‘Counting the cost 2019: a year of climate breakdown.’ Christian Aid. December 2019.

to counteract those changes differ in their effects on the macroeconomy? And if that is the case, can we determine if those effects resemble more demand- or more supply-type of shocks?

Using a panel of 24 OECD countries over the period 1990-2019 the paper shows that climate changes and policies to counteract them can have a significant and persistent effect on output and price levels. In particular, the data of this analysis supports the finding that the impact on output and prices of physical risks is overall negative whereas the final impact of policies and technology is positive on prices and negative on output. We interpret this result as supporting the view that on average for physical risks, (downward) demand adjustments play a bigger role than for transition policies or technology improvement, for which supply-type of adjustments are stronger. Results differ significantly across countries according to various institutional and economic characteristics. For instance, countries that have introduced a carbon tax and that recycle their revenues suffer less negative consequences in the transition to a low-carbon economy or after a climate shock than countries without carbon tax or with a higher exposure to risks.

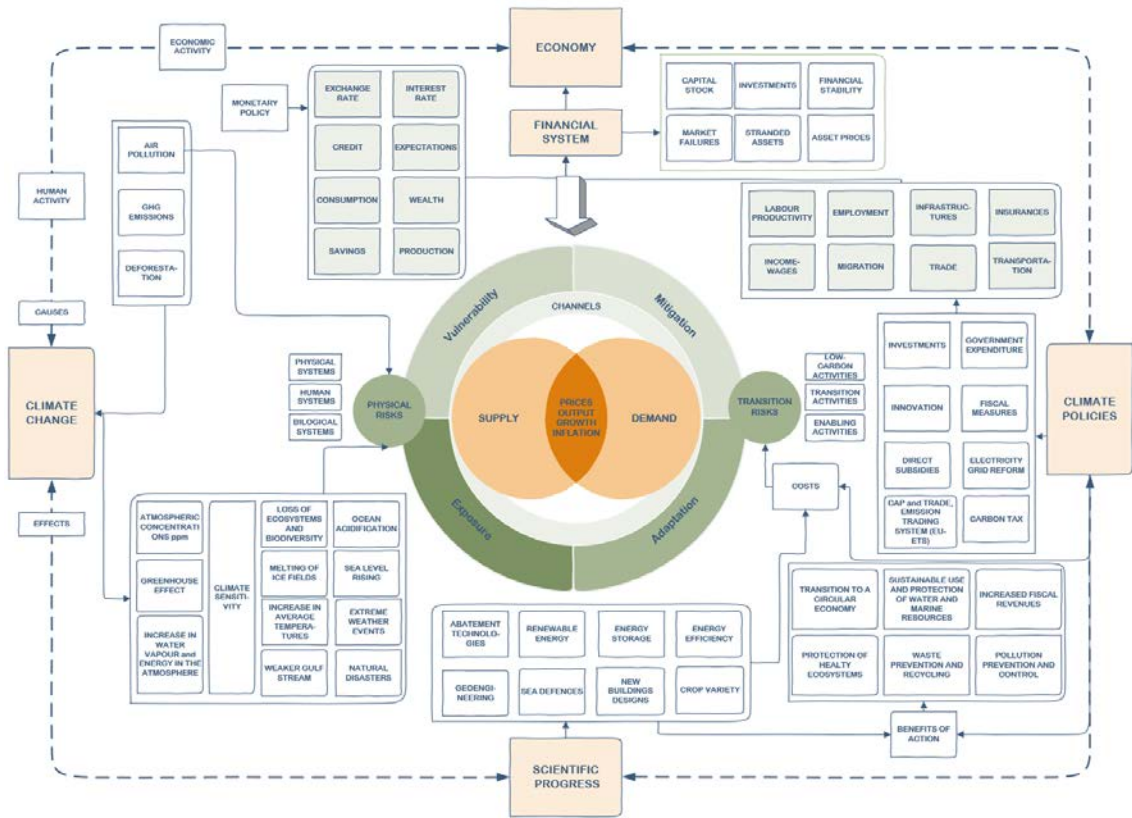
The paper is structured as follows: In Section 2 we selectively survey the literature on the macro impacts of climate-related events or policies and on the main transmission channels. In Section 3 we illustrate the data and the methodology. In Section 4 we present the results. Section 5 explores the transmission channels of the climate shocks and countries' heterogeneity. Section 6 concludes.

2 Channels and literature

The scheme in Figure 1 describes in details the building blocks that we have in mind while designing the framework of the analysis. We consider four main actors, all strongly related to each other: the economy, climate change, scientific progress and climate policies. On the very top we place the economy and the financial system while the macro variables of interest, mainly output and prices, are in the middle of the figure. In green all the channels through which “climate shocks” could affect output and prices via physical risks (on the left part of the figure) and transition risks (on the right).

Physical risks As temperature increases, tropical cyclone activity (including hurricanes) and extreme precipitation events will very likely become more intense and more frequent by the end of the century. Similarly, river floods are also projected to increase in number and severity in

Figure 1: Climate change and the economy



most river basins. In some others regions of the world instead, reduced rainfall and increased evaporation can both lead to droughts, which are projected to become larger and more frequent (IPCC (2014)). These trends and their related damages will most certainly result in higher costs to the economy relative to a world without climate change.

The main direct channels through which the economies are affected is through impacts on physical capital (factories, houses, streets and bridges, machinery, computers but also energy infrastructure), land (natural resources) and agriculture and labor inputs (the workforce). It is straightforward to identify the impact on the supply side: natural disasters and extreme weather conditions would most likely disrupt output, putting upward pressure on prices, lowering future potential growth. However, as discussed in Batten et al. (2020), considering only this mechanism can be “too simplistic” since the literature confirms that there are also demand-side adjustments, both in the short-term and long-term. These are generated by disruption to income, consumption patterns, investments, exports, infrastructures and changes of consumers behavior, potentially related to migration and climate awareness. In fact, climate change is likely to

exacerbate not only the frequency and intensity of natural disasters but also the gradual process of environmental degradation (i.e., air and water pollution, global warming, smog, acid rain, deforestation, wildfires), hence leading to premature deaths and injuries, forcing people to leave their homes and temporarily or permanently move to other places, and affecting well-being and welfare. This suggests that climate change related events may lead to indirect economic effects, altering the long-term economic activity and prices variation through disruption and changes to both demand and supply at the same time.

Transition risks Currently, global emissions of GHG mostly driven by economic growth and fossil fuel energy use, continue to grow, with a 50% increase since 1990 and 35% since 2000 (OECD (2020)). In the OECD area however, the growth rate of GHG emissions has been slowing down since 2007. Even though emissions decreased, partly following the 2008 financial crisis and strengthened climate policies, OECD countries emit about 35% of global CO₂ emissions from energy use (compared to more than 50% in 1990 and to 47% in 2005). Additionally, with many governments still supporting fossil fuel production and use, most countries continue to rely on fossil fuels (in particular oil and gas) for about 80% of their energy supply.

Global scientific consensus lies with the idea that the best way to respond to climate change is through the proper mix of environmental policies and technologies. For a sustainable development this means promoting and aligning strategies for a low-carbon economy and to further decouple GHG emissions from economic growth. The mitigation policy efforts should ensure an appropriate set of market and non-market based instruments, for example by promoting carbon pricing, environmentally related taxation, removing government subsidies and other support for fossil fuels and providing access to climate finance. In the meantime, the development of new environmental-related technologies should support the above strategies (for instance, increasing the share of renewable energy sources in the supply mix, improving energy intensity by adopting energy-efficient production processes and increasing the energy efficiency of consumer goods and services). These efforts, matched with technologies that aim to strengthen our infrastructures and resources (e.g. building stronger sea defences, different design of buildings, or new and stronger crop varieties) would ensure a certain degree of mitigation and adaptation capacity.

Unfortunately, while providing a clear step forward in the protection of our environment, environmental policies could alter economic activity across a range of non-climate areas including transport, housing, constructions, spatial planning, agriculture, and development cooperation.

All of them could have an impact on the demand and supply mix that affects prices. As well, the roll out of new green technologies would encompass significant government expenditure, investment and innovation that could result in changes in relative prices, having a wide-ranging economic impacts (see [Andersson et al. \(2020\)](#) for a review).

Literature Several organizations and academic researchers have attempted to estimate the impact of climate change on the global economy. The focus of the literature is scattered across specific regions, characteristics and effects of climate change. Furthermore, these estimates are subject to considerable uncertainties, given the fact that the pace of climate change remains unclear to scientists and its impacts will most likely become more significant over the long horizon. That said, there is an increasing number of reports and reviews that are key to understand the taxonomy and the potential channels of climate change. In most of these reports conclusions have either been based on standard macroeconomic considerations (e.g., [Andersson et al. \(2020\)](#), [Batten et al. \(2020\)](#)), or on model-based simulations (e.g. [NGFS \(2020a\)](#), [IMF \(2020\)](#)). The empirical literature that aims at testing these channels and macroeconomic consequences has also been growing extensively.

Regarding the effects of physical risks, to the best of our knowledge most papers focus on the direct effects of climate change, such as temperature increase and extreme weather events, while still scarce is the evidence on the closely related phenomenon of environmental degradation. For instance, [Parker \(2018\)](#) studied extensively the impact of natural disasters on inflation. The impact of disasters varies by type, severity, location and sector of the economy as confirmed by numerous case studies investigating individual events or exploring specific countries (e.g., [Kim et al. \(2021\)](#), [Heinen et al. \(2018\)](#), [Cavallo et al. \(2014\)](#), [Baldauf and Lorenzo Garlappi \(2020\)](#), [Canova and Pappa \(2021\)](#)). With respect to the consequences of global warming, namely the slow increase in average temperatures, the literature agrees that in general an average temperature increase has adverse effects on the economy, even though this result is very sensitive to countries' differences ([Burke and Tanutama \(2019\)](#)). Extreme temperatures are found to reduce output ([Burke and Hsiang \(2015\)](#)), labour productivity ([Donadelli et al. \(2017\)](#)), agricultural production ([Winne and Peersman \(2019\)](#)) and food security ([Bandara and Cai \(2014\)](#), [Schaub and Finger \(2020\)](#), [Kamber et al. \(2013\)](#)) and in general economic growth (see [Mumtaz and Alessandri \(2021\)](#), [Kahn et al. \(2019\)](#), [Deryugina and Hsiang \(2014\)](#)).

The previous literature has produced some initial evidence on the channels through which

many types of extreme natural events affect prices and output in different ways. However, given the uncertainty involved in the frequency and damages caused by these events and the difficulties in directly attributing such events to climate change, the available evidence on how the economy will be affected is still hazy. Furthermore, while climate scientists have agreed on climate change causes, most of the global effects and the timing with which these effects will appear remain unclear. These two features, i.e. the fact that climate change is a global phenomenon that unfolds geographically very differently and its unclear timing, make it harder for scientists and macroeconomists to forecast their evolution, pinning down one specific set of variables or models that have the potential to describe the phenomenon accurately in its complexity. Some studies attempt to estimate the effects of climate change on the macroeconomy trying to forecast different scenarios even 100 years ahead of now, providing results that are often subject to many uncertainties. Our idea instead is to choose specific climate variables that capture the exposure to climate change and the vulnerability to its consequences, happening in an horizon that is relevant for the business cycle, using standard macroeconomic tools.

Another relevant part of the literature is the one that investigates the macroeconomic effects of the so-called transition risks. As discussed above, in order to mitigate and to adapt to climate change substantial changes to the economy are needed, implying significant policy intervention, investment and innovation ([Gillingham and Stock \(2018\)](#)). [Metcalf and Stock \(2020\)](#) estimate the macroeconomic impacts of carbon taxes on GDP and employment and find no negative effect on both. Furthermore, based on the work on [Braennlund and Gren \(1999\)](#), they find that carbon taxes have a positive effect on output and employment for countries that used carbon tax revenues to reduce their taxes. With regards to green investments, [Batini et al. \(2021\)](#) show that the multipliers associated with investments on carbon sinking or carbon neutral activities are 2 to 7 times higher than the ones with non-eco-friendly expenditure, boosting economic activity. Similar results are found by [Sokolov-Mladenović and Mladenović \(2016\)](#) and [Wong et al. \(2013\)](#). These results seem to point that policy and investments in research and development have a positive effect on the economy. However, to have a complete picture of the macroeconomic effects it is important to examine the links between environmental policy and innovation, and the potential risks connected with the wrong mix of the two. A large part of environmental economics literature describes two types of market failures that provide the necessity for policy intervention: (1) environmental externalities (because pollution is not priced by the market firms and consumers have no incentive to reduce emissions without policy interventions) (2) knowledge

failures concerning environmental R&D. The public good nature of inventions creates knowledge spillovers, as a result firms do not have incentives to provide the socially optimal level of research activity.

In the literature, policies addressing the first type of externalities are typically referred to as demand-pull policies. They foster technological change by stimulating their demand, increasing the market size for environmental innovation through regulation, carbon tax, financial incentives, standard-setting instruments or information campaigns ([Popp \(2019\)](#)). Policies that address knowledge market failures are called technology-push policies. This type of policies instead aim to foster socio-technical change by reducing the private cost of research and development from the supply side ([Nemet \(2009\)](#)). Typical technology-push policies are non-market based instruments such as public R&D funding or tax reductions for R&D investments. As a result, when the policy mix is characterised by a more balanced use in demand-pull and technology-push instruments, its effects on environmental innovation tend to be greater ([Costantini et al. \(2017\)](#)), mitigating the occurrence of market failures negatively affecting the economy.

To conclude, to the best of our knowledge there are not many empirical exercises that include the interrelated effects of the both physical and transition risks on the economy. Our paper tries to fill this gap using standard macroeconomic tools such as SVAR and to test the combined effect of (1) exposure and vulnerability to climate change and environmental degradation, (2) environmental policies and (3) environment-related technologies on the macroeconomy. By so doing we also aim at providing some additional evidence that could be relevant for the structural modelling of climate and economics. An increasing number of papers that develop structural models often make use of too restrictive assumptions on the effects of climate change e.g. modelling it as a supply shock, or just simplifying on some relevant channels. For instance, [Economides and Xepapadeas \(2018\)](#) model climate change's damage function through changes in average temperatures, negatively affecting output. [Keen and Pakko \(2009\)](#), in a similar way, use a dynamic stochastic general equilibrium (DSGE) model to investigate how monetary policy should respond to catastrophic events. They characterize disasters by a partial destruction of capital stock and a temporary negative technology shock, both reducing output. Considering transition risks, [Niu et al. \(2018\)](#), investigate environmental tax shocks on carbon emissions using an energy-environment-economy DSGE model. Their results are based on the assumption that the share of fossil fuel energy in the total energy use act as direct channel for the effect of environmental policy on the energy sector and, more generally, the economy.

3 Data and Methodology

The paper takes a business cycle perspective and focuses on a medium-term gradual impact of climate-related risks instead of considering either the secular effects of climate change based on the temperature increase or the immediate impacts due to natural disasters possibly caused by it. Moreover, as said above, we aim at empirically investigating the interrelated effects of both physical and transition risks, and testing their economic consequences within a framework that combines exposure and vulnerability to climate change and environmental degradation, climate mitigation policies and adaptation technologies.

For this purpose, we believe that it is possible to cast the analysis into standard macroeconomic tools for business cycle, but that it requires a careful selection of the (available) data to proxy for both physical and transition risks, and to test their economic consequences. In what follows, therefore, we first illustrate with much detail the climate data set – that covers almost 30 years of annual observations (1990-2019) for 24 OECD countries² – and then we describe the econometric approach – that is based on a standard Vector Autoregressive (VAR) model. To proxy for the macroeconomy we use standard concepts and variables that measure real activity – industrial production, investment, employment, value added, business confidence – or prices – consumer price index (CPI), total, energy and food.

3.1 Measuring physical and transition risks

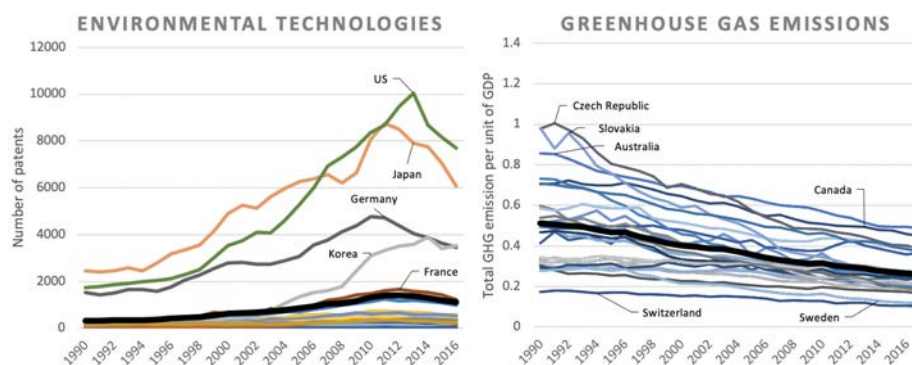
The database used for the analysis combines several variables coming from different sources. Climate related variables are downloaded from the OECD.stat Environment database.³ To proxy for climate changes and environmental risks we use two main variables: (1) total Greenhouse gases (GHG) per unit of GDP; and (2) welfare costs of premature deaths (% of GDP equivalent). To measure environmental policies and technological developments we use two general proxies, namely: (1) the OECD Environmental Policy Stringency index (EPSI); and (2) the number of patents for each country for selected environmentally-related inventions and technology.

The data on emissions (the time series is reported in the right panel of Figure 4) refers to man-made emissions of major greenhouse gases and emissions by gas. It includes total emis-

²Australia, Austria, Belgium, Canada, Czech republic, Denmark, Finland, France, Germany, Greece, Hungary, Ireland, Italy, Japan, Korea, Netherlands, Norway, Portugal, Slovakia, Spain, Sweden, Switzerland, United Kingdom, and USA.

³See <https://www.oecd.org/environment/environment-at-a-glance>

Figure 2: Measuring GHG emissions and environmental-related technologies



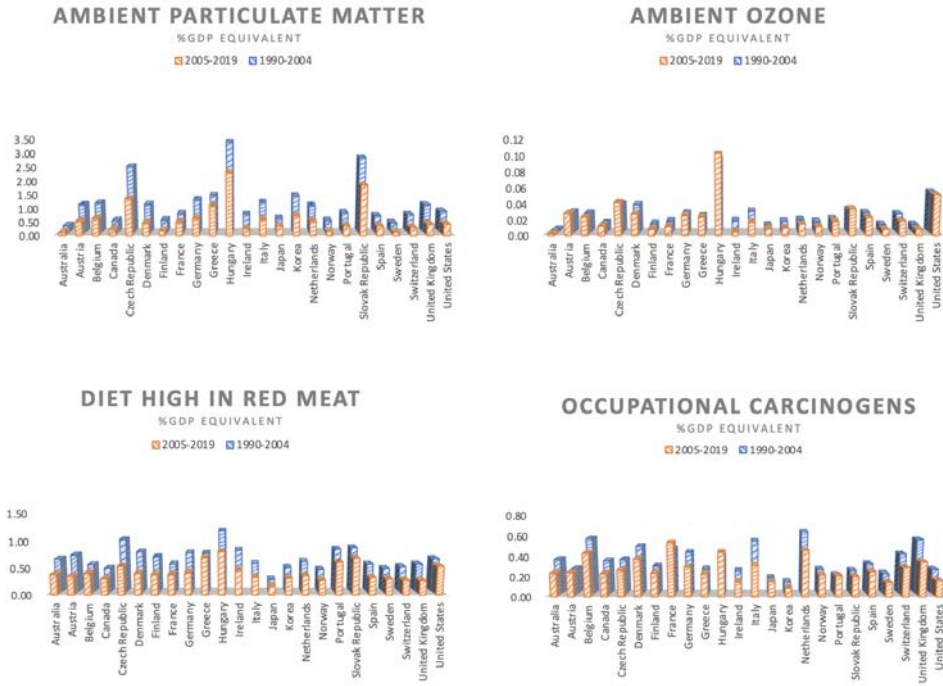
Sources: OECD; Sample: 1990-2019.

sions of CO₂ (emissions from energy use and industrial processes, e.g. cement production), CH₄ (methane emissions from solid waste, livestock, mining of hard coal and lignite, rice paddies, agriculture and leaks from natural gas pipelines), nitrous oxide (N₂O), hydrofluorocarbons (HFCs), perfluorocarbons (PFCs), sulphur hexafluoride (SF₆) and nitrogen trifluoride (NF₃). Data exclude indirect CO₂. We use the intensities (i.e. GHG per unit of GDP) which are calculated on gross direct emissions excluding emissions or removals from land-use, land-use change and forestry (LULUCF). The GDP used to calculate intensities is expressed in USD at 2015 prices and PPPs. GHG have been reducing for all the countries in the sample at an average rate of 1% between 1990 and 2017. Data also show some sort of beta-convergence across countries, namely, countries with a higher initial level of GHG are also those with a higher emission reduction rate (not shown). However this convergence process is far from over and countries generally maintain their initial position with respect to the average.

The second proxy for physical risks refers to the cost of premature deaths from exposure to environment-related risks and we use it as a damage function to measure environmental degradation (i.e. depletion of resources such as quality of air, water and soil; the destruction of habitat and ecosystems; the extinction of wildlife; and pollution).⁴ The measure is built by OECD using epidemiological data taken from Global Burden of Disease Study 2019 (GBD (2019)) while the welfare costs are calculated using a methodology adapted from Roy and Braathen (2017). The core idea of this indicator, conceptually very close to a damage function, is that environment-related risks, such as air pollution, carry a significant economic costs to soci-

⁴Environmental degradation is one of the ten threats officially cautioned by the high-level Panel on Threats, Challenges and Change of the United Nations.

Figure 3: Welfare cost of premature deaths from exposure to environmental-related risks



Sources: OECD; Sample: 1990-2019.

ety through the premature deaths and disabilities that they cause (OECD (2016)). The cost of premature deaths at the society level is measured through the so-called Value of Statistical Life (VSL). In essence, it represents the individuals' willingness to pay (WTP) to secure a marginal reduction in the risk of premature deaths.

The calculation of the VSL, as described in great detail in Roy and Braathen (2017) can be summarised as follows. Suppose that each individual has an expected utility function, EU , relating the utility of consumption over a period $U(y)$ and the risk of dying in that period r :

$$EU(y, r) = (1 - r)U(y) \quad (1)$$

then, the individual's WTP to maintain the same expected utility in the case of a reduction of risk from r to r_1 is the solution to

$$EU(Y - WTP, r_1) = EU(y, r). \quad (2)$$

Thus the VSL is the marginal rate of substitution between the value of consumption and the

reduction of risk of dying, such that:

$$VSL = \frac{\delta WTP}{\delta r}. \quad (3)$$

The WTP, which is derived from surveys (OECD (2012)) is eventually multiplied by the total number of premature deaths, becoming a measure of the economic cost of the impact of environment-related risks. In the model we use three measures of costs due in particular to (i) air pollution (ambient particulate matter, ambient ozone), (ii) environment-related occupational risks (occupational carcinogens), and (iii) environment-related behavioural risks (diet high in processed meat). Figure 3 illustrates the welfare cost of premature deaths from exposure to the selected risks (expressed in % of GDP equivalent).⁵ The figure reports in blue averages in the first part of our sample (1990-2004) and in orange the averages in the second 15 years (2005-2019). We believe that the welfare costs of deaths related to exposures to environmental risks are a reasonable and tangible measure of the damages caused by physical risks related to climate change. The proxy does not capture the consequences of extreme weather events but the long-term effects that gradual climate changes and environmental degradation have on our everyday life. In the empirical analysis we take a simple average over the three welfare costs. This measure shows a decreasing trend not only of the mean – which has been reducing at an approximate rate of 0.8% between 1990 and 2017 across countries – but also of cross-country dispersion – the standard deviation has gone from 0.7 in 1990 to 0.5 in 2017.

We choose not to include in the VAR data about natural disasters because for all the countries we analyse there is not a sufficient set of information about their nature and costs. This implies we don't have enough data to build a long enough macroeconomic series to use statistical methods to analyse their dynamic repercussions. Furthermore, because other events may occur at the time of the disasters, and because costly disasters hit more frequently certain areas than others, we believe that our analysis would not be able to tell what drives the effects on the macroeconomic variable when a disaster occurs. However, we use the available data on exposure to natural disaster in Section 5, when we regroup the countries to analyse country heterogeneity in their responses to certain shocks.

The proxy for technology (see left panel Figure 2) counts the number of patents related to

⁵The dataset includes the following types of risks: Air pollution; Climate risks; Unsafe water, sanitation and handwashing; Environment-related occupational risks; Environment-related behavioral risks. We selected the risks with the higher cost, but results with all the risks included do not differ in sign and magnitudes.

developments in environment related technologies. The statistics are constructed using data extracted from the Worldwide Patent Statistical Database (PATSTAT) of the European Patent Office (EPO) using algorithms developed by the OECD. We use an aggregate category labelled “selected environment-related technologies” which includes all of the environmental domains considered by the OECD. The number of inventions developed by country’s inventors are independent of the jurisdictions where patent protection is sought (i.e. all known patent families worldwide are considered). Cross-country comparability is ensured by the use of indicators based on patent family size which are flexible and can be adapted to various applications (see [Haščič et al. \(2015\)](#)). We use the indicator whose family size – the size of an international patent family (including the first ‘priority’ filing and its equivalents deposited at other patent offices) – is categorised as “2 and greater” (i.e. ‘claimed’ priorities) which counts only the higher-value inventions that have sought patent protection in at least two jurisdictions.

This variable provides therefore a good approximation of the innovation suitable for tracking developments in environment-related technologies for two reasons. Firstly, patents themselves are a direct measure of countries’ and firms’ innovative performance; secondly, since patents applications are usually filled early in the research process they are also an indicator of the level of R&D activity itself.

The pattern shown by this variable, on average, an initial (almost) exponential number of innovations and a subsequent inversion of the initial trend which has started well after the great recession.⁶

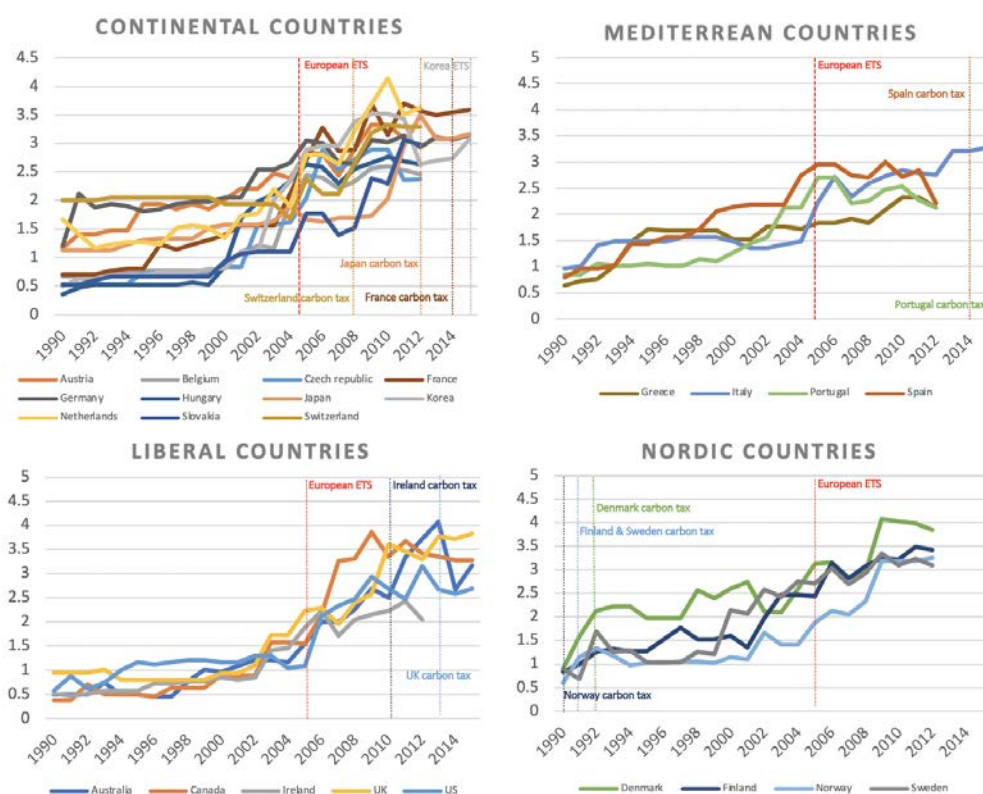
The EPSI is a newly developed OECD composite indicator of environmental policy stringency which records increasingly stringent environmental policies in all countries. It is a country-specific and internationally-comparable measure of the stringency of environmental policy, where stringency is defined as ‘the degree to which environmental policies put an explicit or implicit price on polluting or environmentally harmful behaviour. The EPSI includes therefore the explicit and implicit, policy-induced cost of environmental externalities that polluters have to pay.’⁷ The index ranges from 0 (not stringent) to 6 (highest degree of stringency) and is based on the degree of stringency of 14 environmental policy instruments (market and non-market based, that is, inclusive of demand-pull and technology push policies), primarily related to climate and air pollution (OECD) (for further details see [Botta and Kozluk \(2014\)](#)). The main limitation

⁶especially for five countries, U.S., Germany, France, Korea and Japan.

⁷See Figure A.1, in Appendix for more details on the composition of the index

of this index is that it only covers countries for the period 1990-2012, with data reaching 2015 only for a limited number of countries.⁸

Figure 4: Evolution of Environmental Policy Stringency Index



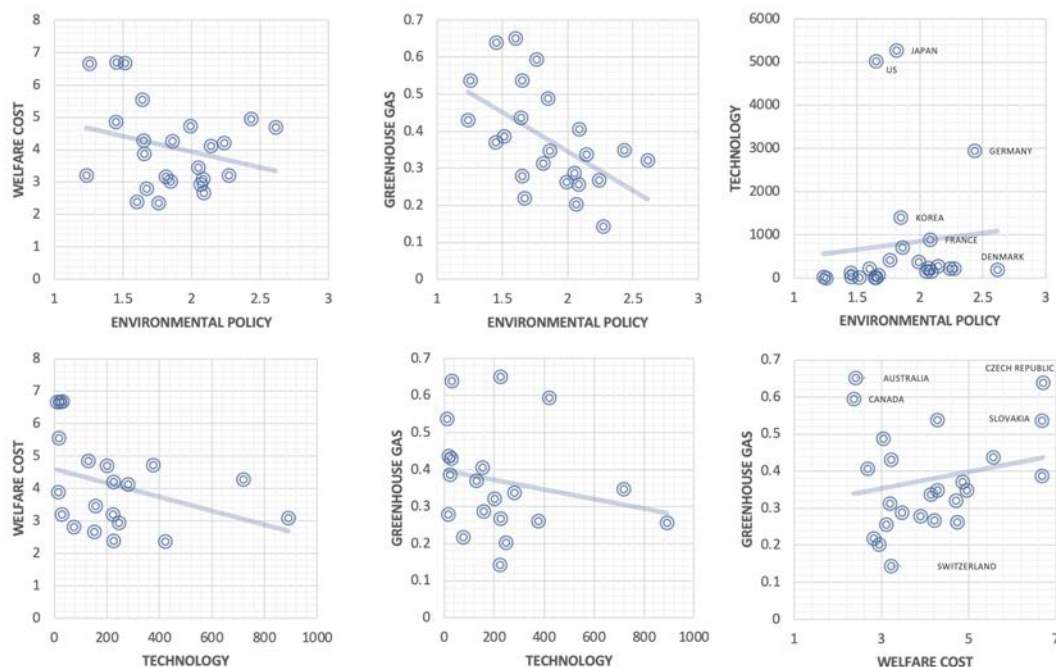
Sources: OECD; Sample: 1990-2019.

The index is a good proxy of the disruption that environmental policies, addressing well-being and sustainability objectives, introduce for firms and household behaviour. Figure 4 shows the EPSI time series for different groups of countries and the years of adoption of carbon tax or emission trading schemes (ETS). Even though there are differences in timing in terms of adoption of carbon tax, the EPSI has registered increasingly stringent environmental policies in all countries. However, after an initial exponential increase at an average rate of 3.1% between 1990 and 2006, the average growth rate of the EPSI has only been 0.89% between 2007 and 2015. There are also some notable differences in the levels which seem to persist: the standard deviation across countries has been stable around 0.5 with notable spikes around and in the aftermath of the financial crisis. Interestingly enough, notwithstanding the lack of a sort of σ -convergence, a regression of the average cross-country growth rate on the initial stringency

⁸Australia, Canada, France, Germany, Italy, Japan, Korea, Turkey, UK and US

level gives a beta coefficient of -1.6, implying not only that all countries have been increasingly stringent in their environmental policies but also that they are converging fast to a steady state. Given that countries tend to opt for similar types of main policy instruments, it remains to be seen to which steady state they are converging and whether that steady state is enough to implement a sustainable change.

Figure 5: Correlations between climate variables



Sources: Authors' calculation; Sample: 1990-2019

Unconditional correlations among the various variables are shown in Figure 5, which report the bilateral scatter plots across the four variables. Unsurprisingly, innovation in environment-related technologies and the stringency of environmental policies are negatively correlated with gas emissions and with the welfare cost of deaths, which in turn are positively correlated among themselves. Moreover, the unconditional correlation between environmental policies and environment-related technologies confirms that there are some relevant countries' differences. It appears that, not only the technological development is driven by just a few countries (US, Japan, Korea, Germany and France) with more or less low levels of policy (with the exception of Germany), but there are several countries (such as Denmark, Sweden, Switzerland) that have high levels of policy but very little environment-related technologies.

3.2 The econometric model

We investigate the dynamic relationship between measurements of physical and transition risks, and macroeconomic variables in a SVAR model estimated with panel data.

For each country, the model can be written as:

$$A_{i0}Y_{it} = \mu_i + A_i(L)Y_{it-1} + \nu_{it} \quad (4)$$

where the A s are coefficient matrices, μ_i is a vector of country-specific constants, and ν_{it} is a zero-mean vector of orthogonal structural shocks with diagonal variance-covariance matrix D_i . The vector Y_{it} consists of two sets of variables, the climate-related variables and the macroeconomic ones. Our analysis is based on two main specifications, depending on the size and composition of the macroeconomic block. The climate block, instead, is unchanged throughout the analysis and consists of four variables as illustrated in the previous section, namely (i) the Environmental Policy Stringency index, (ii) the Environment-related Technologies, (iii) the Greenhouse Gas emissions; and (iv) the Welfare cost of premature deaths due to exposure to environmental risks (damage function). The macroeconomic set of variables of the baseline exercise contains (i) industrial production (or GDP) as a measure of activity; (ii) energy prices; (iii) food prices; and (iv) core prices (i.e. total prices excluding energy and food). The macroeconomic block will be subsequently enlarged in Section 5 when we discuss the role that some channels play in the transmission of climate-related shocks, the heterogeneous response across groups of countries that differ in several dimensions, and the differential effects across the various sectors of the economy.

In the empirical analysis, all variables are in log levels multiplied by 100. The estimation period spans from 1990 to 2019. However, the panel is unbalanced and for some countries data are not always available over the full sample.⁹

We make the following general assumptions for the reduced-form estimation of the model:

1. The data generating process features dynamic and static homogeneity, namely that $A_i(L) = A(L)$, and that $D_i = I$ and $A_{i0} = A_0$. The latter implies that the variance-covariance matrix of the reduced form shocks, $A_{i0}^{-1}A_{i0}^{-1'} = \Sigma_i$, is also common across countries ($\Sigma_i = \Sigma$).
2. The reduced-form shocks (ϵ_{it}) are serially and sectionally uncorrelated.

⁹For instance for the stringency index the most recent update of the variable covers until 2015 for some countries with many of them having data only until 2012.

3. A linear deterministic trend is used in the estimation to account for the non-stationarity of most variables.

Under these assumptions, pooled estimation with fixed effects – potentially capturing idiosyncratic but constant heterogeneity across variables and countries – is the standard approach to estimate the parameters of the model (Canova and Ciccarelli (2013)). Let’s discuss the assumptions in turn.

The homogeneity assumption is probably the strongest one because if the slope parameters differ across countries, a (frequentist) fixed effect-type estimator is biased and inconsistent (Pesaran and Smith (1995)) even when N (the cross section dimension) and T (the time series dimension) are large enough, which is anyway not the case in our analysis. We therefore only use this assumption as a first approximation because we are constrained by the available data which covers too short of a time span to fully account for country heterogeneity (even for a mean group estimation). This assumption will however be partially relaxed in Section 5 when we discuss the heterogeneous impact of different groups of countries to climate-related shocks. In that case, we split the countries in various groups according to country-specific characteristics (such as their level of income, their adoption and use of a carbon tax, or their degree of exposure to natural disasters or other risks) and pool the data for estimation separately by groups.

The serial and sectional uncorrelation assumptions are standard when estimating a panel of dynamic simultaneous equation models (see e.g. Rebucci (2010)). However, while the serial uncorrelation is a standard practice in VAR models, the sectional uncorrelation can be stronger than usually discussed with panel data, especially in a macroeconomic setup where international spillovers are the norm rather than the exception. In one of the robustness check we will modify the main VAR specifications to include a measure of the country interdependencies similarly to the Global VAR approach (e.g. Chudik and Pesaran (2016)), that is by adding in a country VAR the cross country average of national GDP growth rates (calculated over the other countries).

Finally, the deterministic trend is an empirically convenient way to account for non-stationary data (based on the assumption that the data is indeed trend-stationary), to partially compensate for the low lag order of the VAR, and to condition the estimation on initial values of the endogenous variables which are in levels. A sum-of-coefficient prior will also be used to complement this assumption.

3.2.1 Reduced-form estimation

The reduced-form of model (4) is

$$Y_{it_i} = C_i + B(L)Y_{it_i-1} + \epsilon_{it_i} \quad (5)$$

where $C_i = A_0^{-1}\mu_i$, $B(L) = A_0^{-1}A(L)$, and $\epsilon_{it_i} = A_0^{-1}\nu_{it_i}$. We estimate this model using Bayesian techniques, which require specifying a prior information for the unknown, in terms of a functional form for the distribution of the error term and for the parameters.

We re-write the model in matrix format stacking first by t for each country and then by i as:

$$\mathbf{Y} = \mathbf{X}\mathbf{B} + \mathbf{E} \quad (6)$$

where \mathbf{Y} is a matrix of $NT \times m$, $NT = \sum_{i=1}^N T_i$, m is the number of variables in the VAR for each country, \mathbf{X} is the re-arranged matrix of lagged \mathbf{Y} and of dummy variables for the country “fixed-effects” and \mathbf{B} is the matrix of the coefficients which contains the common $B(L)$ ’s and the loadings of the country specific constants.

We assume that the errors are normally distributed and we use a conjugate Normal-Inverse Wishart prior distribution for the parameters, such that:

$$p(\mathbf{B}, \Sigma) = p(\mathbf{B} | \Sigma)p(\Sigma) \quad (7)$$

with

$$p(\Sigma) = iW(S, \nu) \quad (8)$$

and

$$p(\mathbf{B} | \Sigma) = N(\mathbf{B}_0, \Sigma \otimes \Omega_0) \quad (9)$$

Under this prior, the posterior distribution has the same functional form and is easy to simulate from. To elicit the prior hyperparameters we follow [Bańbura et al. \(2010\)](#). Specifically, we use a standard Minnesota prior for the prior hyperparameters \mathbf{B}_0 and $\bar{\Omega}$, with the mean for the own lag equal to 0, the general tightness (λ) equal to 1 and the tightness for the constant is diffuse. As for the covariance matrix of the residuals it is assumed to be diagonal and its elements are estimated from univariate AR(p) model. Finally, we use a sum-of-coefficient prior whose shrinkage parameter $\tau = 10 * \lambda$. We implement the priors adding dummy observations.

The posterior distribution is simulated 10000 times and the VAR is estimated with one lag.

3.2.2 Identification strategy

Let us recall that the purpose of our paper is to analyse to what extent climate-related shocks have meaningful effects on the macroeconomy over a business cycle horizon.¹⁰

To identify the climate-related shocks we use a block triangular (Cholesky) factorization of the variance-covariance matrix of the reduced form errors, with the climate block ordered before the macro block. This implies that the macroeconomic shocks will not impact contemporaneously the climate variables, and therefore the possible consequences on climate or climate policy of macro shocks can only be appreciated only after one year. This assumption can be somewhat unconventional for, in the loop between the climate and the economic systems, emissions are usually a consequence of the economic activity while the economy gets hit by the damage that generates after emissions affect the climate system. In the contemporaneous dynamics of our model, instead, we order the climate block before the macro block and, among climate variables, we place first environmental policy and technology. Results are anyway robust to a reversed orderings of the two blocks whose reduced-form errors are in fact almost uncorrelated.

In the climate block we identify four shocks, one for each variable: two transition risk shocks – policy and technology – and two physical risk shocks – GHG emissions and welfare cost of environmental degradation. A policy shock increases the stringency index at time 0 while a technology shock increases the number of climate-friendly innovations without affecting at time 0 the policy index which can react to it only after one year. Both shocks can affect contemporaneously the level of emissions and the welfare cost of premature deaths. We experiment both by assuming that emissions and welfare react negatively to both shocks, and by leaving them unrestricted in the Cholesky decomposition. The results are practically the same, therefore the benchmark results are based on the simple Cholesky. For physical risks we identify two additional shocks: one that increases the level of GHG emissions and of the welfare cost of premature deaths (our damage function), and one that increases only the welfare costs of environmental degradation.

In the baseline specification we leave the macroeconomic shocks unidentified. In robustness

¹⁰We are less interested in the effects of the typical macroeconomic shocks (say demand and supply) on climate variables, although their (relatively more standard) identification can allow us both to understand if physical and transition shocks can be classified as demand or supply, and to help us gauge the size and persistence of the effects of climate related shocks in a comparative manner (see robustness Subsection 4.1 and Appendix, Figure A.8).

checks we also experiment by identifying standard demand, supply and monetary policy shocks with the typical assumptions that the former have positive signs on both output, prices and interest rates, whereas the second is a negative technological shock or a type of cost-push shock that reduces output and increases prices and interest rates. The monetary policy shock instead is identified with the assumption of a negative effect on both output and prices (see Appendix, Table (5) for more details on the sign identification).

Physical risks policy scenarios Following a similar approach of the one used in [Mountford and Uhlig \(2009\)](#) we can use the basic shocks identified in the previous section to analyze the effects of the physical risks shocks under selected policy scenarios. More specifically, we extend the assumption implied by the Cholesky identification, that the two transition risk variables – environmental policy and technology – do not react to the physical risk shocks only contemporaneously. In a counterfactual scenario-type of experiment we leave the subsequent impulse response functions of stringency and technology muted for the whole forecast horizon, so that for the shocks that increase emissions or the damage function, the endogenous response of the policy or technology is silent for a long period of time. Furthermore, for the shock to welfare cost of environmental degradation (our damage function) we extend the scenario above leaving unresponsive also the IRF of the GHG emission variable, so that we can interpret this final shock as one that increases only the welfare costs independently of an increase in emissions. This latter works as a worsening of the damage from other sources than GHG emissions. Beyond a pure triangular identification, therefore, this experiment implies defining a climate shock scenario by assuming an increase in GHG (or the damage) and, at the same time, by generating a sequence of shocks to the stringency and technology (and GHG) variables that leave their IRFs unresponsive. For the two “physical risk shocks” we will only report results based on these scenarios.

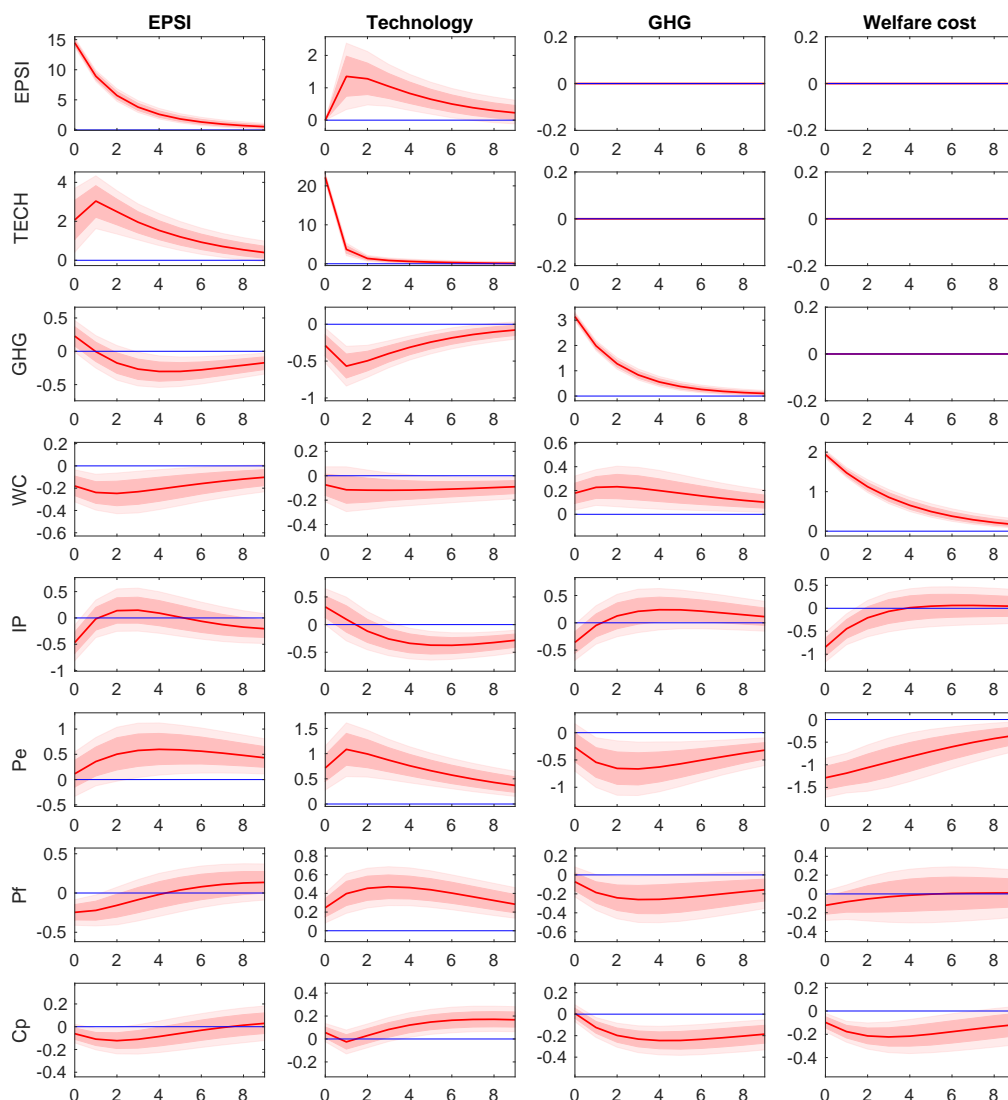
4 Baseline results

In this section we report a first set of results based on the baseline (“small”) VAR with the four climate-related variables and four macroeconomic variables, namely the industrial production and the price levels (energy, food, and total excluding energy and food).

We report impulse response functions – to check how much macro variables move when

physical or transition risks rise by one-standard deviation – and the forecast error variance decomposition – to check the relative importance of the climate shocks for the macro variables. Results are shown only for the four climate shocks. Because the variables are transformed in log multiplied by 100, the unit scale of the IRFs is directly expressed in percentages.

Figure 6: Impulse response functions of shocks to transition risks and physical risks



Sources: Authors' calculation; Sample: 1990-2019.

Baseline results are reported in Figure 6 where in each column we plot the responses of all variables to one-standard-deviation increases in the innovation of the four climate variables heading the columns, namely environmental policy stringency index, environment-related technology,

Table 1: Variance decomposition (unit %)

Variance decomposition		EPSI	TECH	GHG	WC	IP	Pe	Pf	Cp
$EPSI_t$	1 y	100.00	0.87	0.52	0.84	1.10	0.11	1.27	0.34
	5 y	91.30	4.41	1.37	2.50	0.87	1.30	0.92	1.09
	10 y	85.21	4.65	2.30	2.89	1.05	2.38	1.17	0.94
$TECH_t$	1 y	0.00	99.13	0.84	0.18	0.52	1.44	1.26	0.28
	5 y	1.41	82.98	4.25	0.67	0.87	4.57	4.53	0.66
	10 y	1.55	77.40	4.09	1.02	1.63	5.02	5.45	1.86
GHG_t	1 y	0.00	0.00	98.46	0.82	0.65	0.22	0.15	0.08
	5 y	0.00	0.00	85.59	2.50	0.79	2.00	1.26	3.54
	10 y	0.00	0.00	77.29	3.09	0.96	2.85	1.64	4.77
WC_t	1 y	0.00	0.00	0.00	97.81	3.58	4.68	0.31	0.82
	5 y	0.00	0.00	0.00	90.28	2.15	6.95	0.39	3.83
	10 y	0.00	0.00	0.00	82.42	2.11	7.51	0.53	3.65

GHG emissions and welfare costs of premature deaths. The red line represents the median responses and the shaded areas are the 68 percent (dark) and 95 percent (light) Bayesian credible sets.

Four initial considerations are in order. The first striking result from these responses is that climate-related shocks can have a significant impact on macroeconomic variables over an horizon comprised between 2 and 8 years, i.e. the “typical” range for a business cycle periodicity. Although some of these responses (in particular on energy prices) can be sizeable, this does not mean that climate related shocks associated with either physical or transition risks are to be regarded as strong direct sources of business cycle movements. In fact, from the variance decomposition associated with each shock, the small magnitude of the relative importance of these shocks for macroeconomic variables can be easily appreciated (Table 1). However, judging from a first visual inspection, it seems that physical or transition risks can certainly affect for instance the price of energy in a substantive manner. In turns, to the extent that this translates in significant changes in variation in business and consumers sentiment or investments that affects overall spending in the macroeconomy, these shocks could eventually impact the business cycle fluctuations and become of first order importance also for central banks. We will analyse in more detail the transmission mechanism in the next section.

Second, climate change – as identified with shocks to either emissions or the welfare cost of premature deaths due to environmental degradation (our damage function) in absence of policy

or technology – have a negative and significant impact on both output and prices. While the effect on production is fast – with a negative sign at impact – and “short-lived”, the effects on prices typically pick between 2 and 5 years (with the exception of the response of energy prices after a shock to the damage variable) and are much more persistent.

Third, a shock that increases the technological adaptation to fight climate change is reinforced by a positive response of the policy index, and reduces both the level of emissions and the economic damage over the business cycle. This combination of results from the climate system has a depressing effect on output between 2 and 10 years (after an initial increase) and a positive effect on all price levels with somewhat different dynamics: The price of energy increases faster and more forcefully with a pick between one and two years; food prices pick after three years and react in a more persistent manner; core prices do not react much in the first two years and become significant and persistent in the medium-to long run.

Finally, the effects of a shock to climate policy as measured by the stringency index have the expected sign on climate variables. In particular, an increase in the price that firms face when polluting is not only followed by an increase in technological investments but has also a clear mitigation effect as represented by a reductions in GHG emissions (after a small initial increase) and in the damage costs. Regarding the effects on the macroeconomic variables, an initial negative effect on industrial production is followed by a positive response over the medium term, and energy prices increase as expected in a sustained manner while food and core prices decrease.

These first results can be interpreted through the lens of the discussion on the channels we have entertained in Section 2. First of all, in our simple set up we do not have extreme weather events or natural disaster associated with climate changes. In fact, the proxies that we use for physical risks are more associated with medium-to-long term effects of global warming or with the exposure and vulnerability of society and natural systems to climate events (in short, environmental degradation). Though different in timing and immediate severity, both risks are dynamically evolving over time and interacting with each other in a complex and non-linear fashion, a feature that our linear model of course cannot capture. But the sign and persistence of the responses we obtain are quite telling of the kind of shocks that they subsume. It has been fairly common to assume that physical risks associated to climate changes act as (negative) supply-side shocks or as a combination of both negative supply and demand shocks through a number of different channels. Therefore the effect of these shocks on production or output is

certainly negative at least in the near term. Our results in Figure 6 are consistent with this simple fact.

By contrast, the overall impact on prices (and inflation) is in principle ambiguous, since it depends on the overall balance of supply and demand shocks, which may differ between individual events. Moreover, that balance may itself differ between sectors, such that the overall impact on the economy in general and on prices in particular may depend on its sectoral make-up. Looking at the responses of prices it seems that the effects on prices are significantly negative and persistent in our sample, and indeed show a marked difference between sectors, with the effects on energy prices being much more pronounced than those on food and core prices. In other words, looking at both production and prices these results would be consistent with a predominance of demand (relative to supply) type of adjustments.

Let's now turn on what the literature identifies as transition risks, namely the risks associated with the introduction of more stringent policies or the sponsorship of more climate-friendly technologies. The macroeconomic impacts from transition risks arise from fundamental shifts in energy and land use which can cause output loss. For these risks it is also reasonable to expect a mix of demand and supply downward adjustments (Batten (2018)), although the downward impact on supply could be more pronounced than the one on demand, leading to increasing prices and depressing production. The upward pressures on prices come from the transition to a low-carbon economy through the pricing of the externalities associated with carbon emissions. These upward pressures could partially be offset by technological changes that improve productivity or to the adjustment of consumers' preferences towards carbon-neutral goods and services. Results reported in Figure 6 are consistent with the view that the combination of shocks reflect downward supply pressures more than demand movements, especially for the technology shock which gives rise to a significant and persistent downward impact on production and significant positive impacts on all prices. The effects of policy stringency instead is more ambiguous and less negative on production than a shock to technology over the business cycle. We will explore further these results and the transmission channels in Section 5.

4.1 Robustness

As a robustness check we explored if and how the baseline results discussed above vary according to: (1) the change of proxy for output, (2) the addition of a measure of cross-country interdependencies, and (3) a possible time variation of the coefficients. Moreover, to have a

somewhat more detailed measure of the magnitude of the climate shocks on the macroeconomic variables we compared them to the standard macroeconomic shocks (namely demand, supply, and monetary policy). This is also going to suggest how variables capturing various aspects of climate change can vary over the business cycle and, in turn, what is the “climate change value” of stabilization policies.

As a first check for (1) and (2) we modified the baseline VAR specifications to include GDP (in levels or per capita) replacing Industrial Production and a measure of the cross-countries correlations (e.g. [Chudik and Pesaran \(2016\)](#)), that is captured by adding in a country VAR the cross country average of national GDP growth rates (calculated over the other countries). Baseline results are robust with GDP as an alternative measure of output and to taking into account spillover effects (see Appendix, Figure [A.6](#)). To take into account the possibility of changing parameters over time we performed a simple exercise which compared the results of the model estimated over the full sample (1990-2019) with those of the same model estimated over the sample (1990-2008), i.e. before the great recession and the financial crisis. Results (see Appendix, Figure [A.7](#)) show that a shock to stringency, even if it has a less powerful effect on technology (that is also reflected in a less strong effect on output and energy prices), does not differ much from the full sample results. A similar result also appears for a shock to technology: the reason could be attributed to the fact that environmental policies and technologies had a faster development in the second half of the sample. The responses to a shock to GHG emissions does not vary in sign but does vary in magnitude, as the negative effect on prices seems to be stronger. However the responses to a one standard deviation increase to the Welfare cost of premature deaths has a positive effect on output. The forecast error variance decomposition (see [Table 4](#)) shows, however, that for the first half of the sample (before crisis) the importance of the Welfare Cost shock is relatively lower than for the full sample results. Overall this exercise hints to the fact that the importance and the effects of climate shocks on the macroeconomy might be more intense in recent years, as climate change and environmental degradation have become worse and the efforts to mitigate them have gained momentum.

As a final robustness check of the baseline results we compared them to a more standard identification of macro shocks, namely demand supply and monetary policy. We specified the VAR with the four climate variables (environmental policy, environmental technology, GHG emissions and welfare cost) and three macro variables (industrial production, total prices and long-term interest rates). We identify the standard macroeconomic shocks following the lit-

erature with a sign identification strategy (see Section 3.2.2). Identification and results are displayed, respectively, in Table 5 and Figure A.8 in the Appendix. As expected, results confirm that climate shocks, compared to standard supply, demand and monetary policy shocks, are lower in size but still significant in their signs. Interestingly enough, the variation over the business cycle of climate-related variables can be different in size and significance depending on the type of shock hitting the economy. A monetary policy shock, for instance, seems to have a more significant and sizeable effect than a demand or a supply shock not only on the welfare but also on the incentives to introduce new climate policies or innovations which, after a monetary tightening, would considerably and persistently shrink, causing a further and persistent increase in emissions and in the damage costs. This outcome – which gives us a preliminary idea about the “climate change value” of a stabilization policy such as monetary policy – may pose further limits to the margins of manoeuvre of a central bank that is committed to taking the impact of climate change into consideration in the monetary policy framework (see e.g. [European Central Bank \(2021\)](#)). Clearly, such a preliminary evidence deserves further investigation which goes beyond the scope of this paper and is left for future research.

5 A closer look: Transmission channels, sectors, and country

In this section we aim at contextualizing the previous results and extend the baseline analysis in two dimensions: first, we enlarge the set of endogenous variables in the baseline VAR to include variables that proxy for some of the main transmission channels – Business Confidence Index, Investments (governments, households and corporate) and Employment – as well as variables that capture a more granular sectorality – Value Added of energy and agricultural sectors. This extension not only can allow us to test the potency of some of the possible channels through which a shock to a climate-related variable reaches productions and prices (e.g. expectations and investment), but can also account for the possible diverse impact of climate-related shocks on different sectors. Second, we perform the analysis by groups of countries and check if results are sensitive to country-specific characteristics, related to country economic features – such as income – or climate traits – such as their exposure to and risk of natural disasters and adoption and use of a carbon tax.

5.1 Exploring the transmission channels

The enlarged VAR contains now 15 variables. All the additional variables (BCI, Investments, Employment and Value added) are downloaded from the OEDC.stat database. The business confidence indicator provides information on future developments, based upon opinion surveys on developments in production, orders and stocks of finished goods in the industry sector. Numbers above 100 suggest an increased confidence in near future business performance, and numbers below 100 indicate pessimism towards future performance.¹¹ To proxy for investments we use the gross fixed capital formation (GFCF).¹² Investment by sector (measured as % of total GFCF) includes household, corporate and general government. For government this typically means investment in R&D, military weapons systems, transport infrastructure and public buildings such as schools and hospitals. Employment rates are defined as a measure of the extent to which available labour resources (people available to work) are being used. They are calculated as the ratio of the employed to the working age population.¹³ The value added by activity (volumes, energy and agriculture) reflects the value generated by producing goods and services, and is measured as the value of output minus the value of intermediate consumption. The data, expressed in US\$ (2015), are downloaded from the STAN STructural ANalysis Database of the OECD.

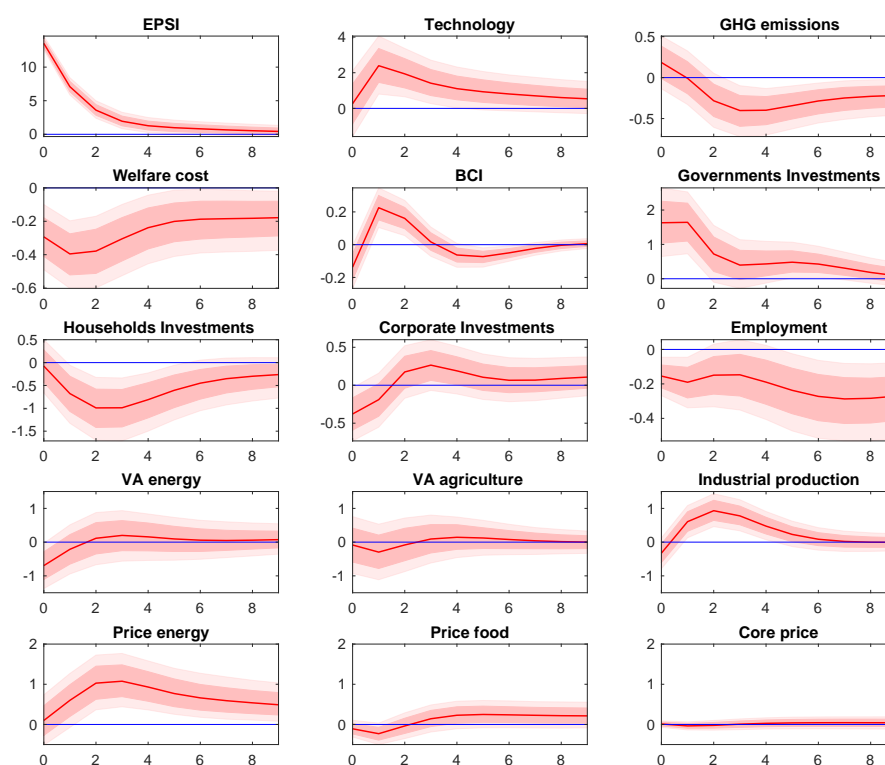
The IRFs to the four climate shocks are reported in Figures 7 - 10. The results found with the baseline specification are broadly confirmed with the extended VAR. In addition we can now have a better qualification of the transmission mechanism. For instance, Figure (7) reports the responses to a one-standard deviation shock to the environmental policy stringency index. The effects on the climate variables are as before, with an increase of policy-induced technology and a reduction of both emissions and the damage costs. The increase in technology is presumably linked to: first, the mix of demand-pull and technology-push policies comprehended by the EPSI and secondly, as a consequence, the immediate rise of government investments in research and development (R&D). This result is shown by the response of government investments that increase after the shock. However, its response is not persistent and dies out after 2 to 4 years, while private investments, after being initially crowded out, pick up in a consistent manner

¹¹Amplitude adjusted, Long-term average = 100. OECD (2021), Source: Business tendency and consumer opinion surveys.

¹²Source: National Accounts at a Glance.

¹³This indicator is seasonally adjusted and it is measured in numbers of employed persons aged 15 to 64 as a percentage of working age population. Source: Labour market statistics

Figure 7: Impulse response functions of a shock to EPSI

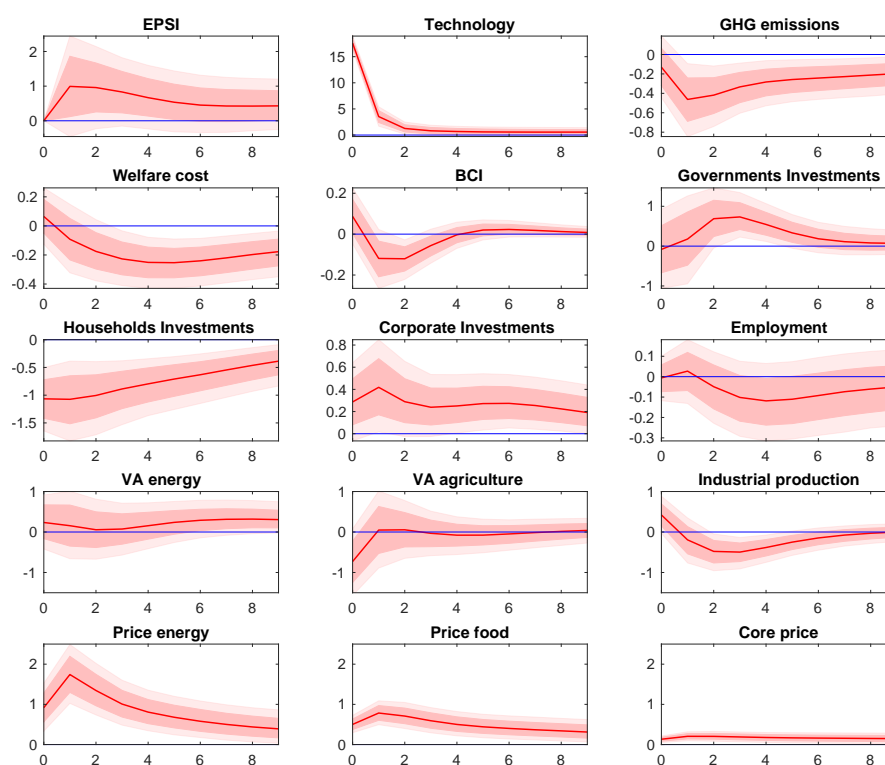


Sources: Authors' calculation; Sample: 1990-2019.

exactly after 2 years. This finding squares consistently with the idea that environmental policies (and policy-induced innovation) create externalities that may require policy action to provide sufficient incentives for private R&D directed at exploring new technologies as well as for the adoption of greener production methods (Popp (2019)). Therefore, while the goal of public direct investment (or incentives and tax policies) might not be enough to build the clean energy economy of the future, it can certainly create the conditions for the private sector to closing the adaptation gap. This seems to be confirmed by our results. Notice, however, that the tighter climate policy paired with higher government investment in green technologies crowds out entirely households investments, a typical demand-type shock induced by climate policies that promote investment in low-carbon technologies (Batten et al. (2020)).

The effects of a policy shock on output and prices also broadly confirms the baseline results with a negative effect on the energy production – which, together with the positive response of the energy prices, gives rise to a typical cost-push type of response – and a significantly positive effect on industrial production after an initial negative sign. Somewhat surprisingly

Figure 8: Impulse response functions of a shock to Technology



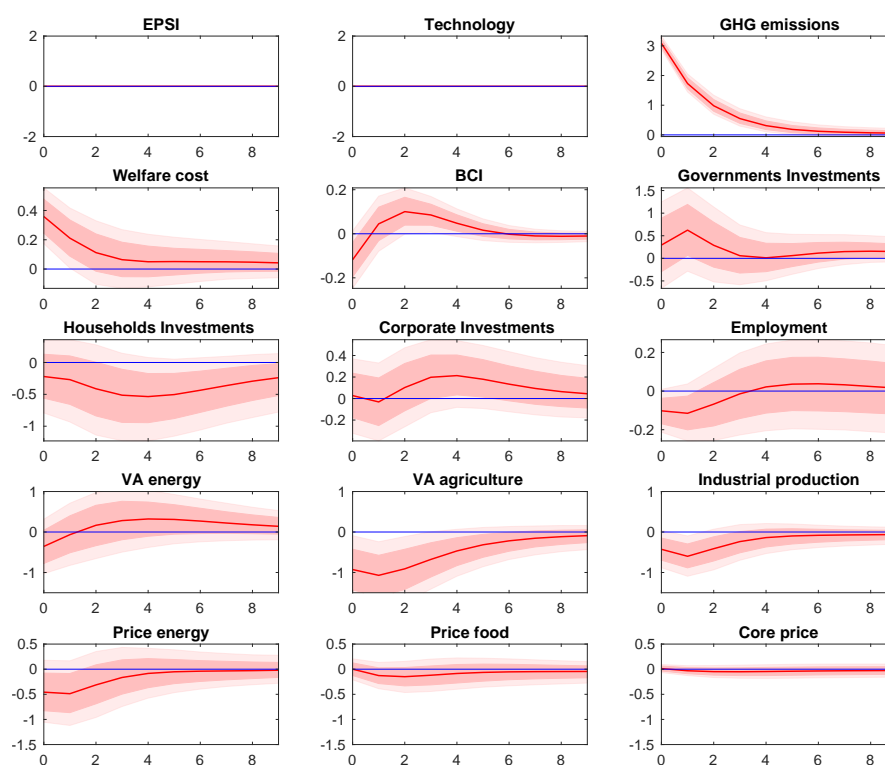
Sources: Authors' calculation; Sample: 1990-2019.

we also observe a negative effect on employment. In other words, results seem to indicate that the net effect between the job creation driven in a number of economic sectors with low emission intensities by a transitions to low-carbon, environmentally sustainable economy can be more than compensated by a significant job destruction in traditional emission-intensive sectors which likely causes a final negative effect on total employment.¹⁴

Notice, though, that the effects on employment and output as measured by industrial production, seem to point to a significant increase in overall productivity, a result that is consistent with the work of [Brunel \(2019\)](#) and [Franco and Marin \(2015\)](#). We will take up the employment channel also in the next subsection when we will relate the effects of climate shocks to country specific characteristics.

¹⁴As a robustness check we analysed the effect of the policy shock on employment by sector. Results (not shown but available upon request) suggest that a shock to EPSI has a negative effect on employment in the service sector, while having a positive effect in the agriculture and industry sectors. Notice, though, that for the OECD countries of the analysis, the service sector is the one with the largest share of total employment. This would be enough to rationalise the negative effect we observe on the aggregate employment, most of which is driven by the service sector

Figure 9: Impulse response functions of a shock to GHG emissions



Sources: Authors' calculation; Sample: 1990-2019.

To better understand the strength of some of these transmission channels, Panel (a) of Figure (11) describes the scenario where a shock to environmental policies is not followed by initial government investments and the resulting technological adaptation that can guarantee a transition to an effective low-carbon economy. We engineer this experiment by creating a sequence of shocks to technology and government investments that shut down their responses. As a result we find that the reduction of emissions and welfare costs is less intense, there is no ‘crowding-out’ effect on business investments, and there is a more muted reduction of employment as well as a greater inflationary pressure coming from energy prices.

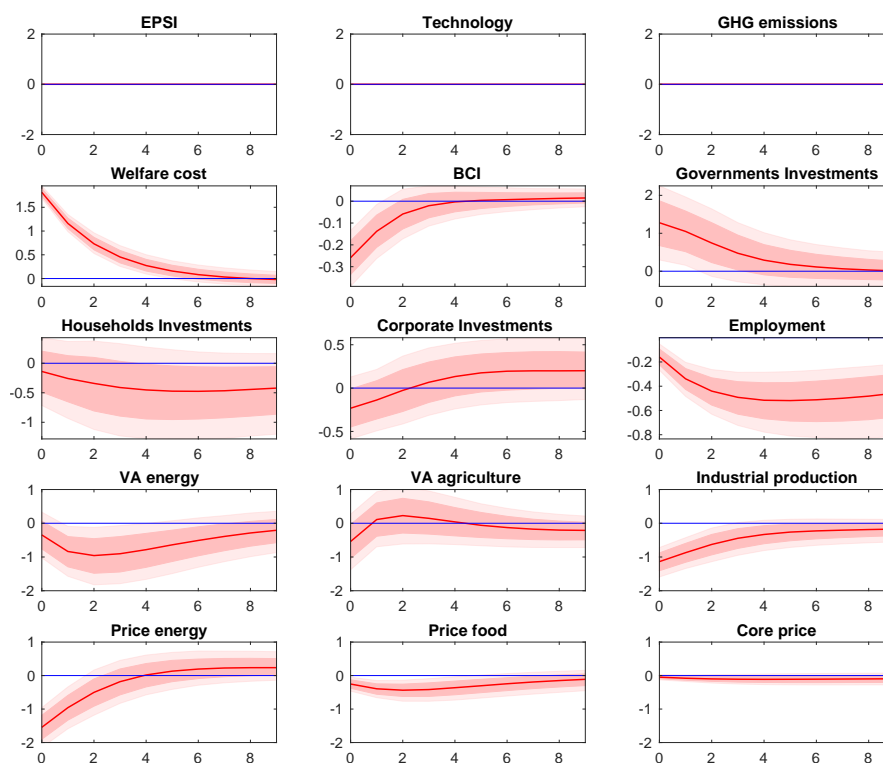
While overall for environmental policy (and policy-induced innovation) we don’t find substantial disruptive effects on the real economy with a combination of demand-side shocks resulting in investment crowding-out and negative supply-side shock in the energy sector, results are more clear-cut for a shock to environmental technology. This shock is interpreted as an exogenous increase in environmental technology that is not induced (or supported) by environmental poli-

cies or public investments.¹⁵ Figure (8) shows that a sudden increase in the number of patents for climate related technologies, while being very effective in curbing emissions and the damage costs, has a depressing effect on business expectations, somewhat on employment, and definitely on industrial production. At the same time, all prices are positively and significantly affected which suggest that the technological transition to low-carbon emission come at the cost of diverting resources from productive activities to mitigation investments. With a shock to technology, only households' investments are now crowded out, whereas new investment opportunities are taken up immediately by the private sector and subsequently also by the government (perhaps as a consequence of the endogenous increase in policy mitigation). The negative effect on business confidence (after an initial and short-lived positive response) is most likely related to the possible uncertainty about the rate of innovation and the adoption of clean energy technologies that follows the increase of the newly patented inventions (Batten et al. (2020), Batten (2018)). Overall these results provide preliminary evidence that a shock to policy (and policy-induced innovation), even though acts as a supply type of shock on the energy sector (increasing prices and reducing output), does mitigate the effect of climate change and has the potential to boost the economic activity. On the other end, however, the results of a shock to technology suggest that, if innovation is not supported from the supply- and demand-side by the right policy mix, then the weight of the transition to a low-carbon economy would be carried by businesses and private investments, resulting in market failures that have the potential to slow down the economy.

We now turn to the results of a one-standard-deviation shock to our climate-change variables (Figure 9 and 10). As discussed in the identification section, we are interested in understanding the effect of a somewhat “exogenous” shock to climate. As for the baseline model, we identify such a shock as an increase of GHG emissions or of the damage function (welfare cost of premature deaths due to the exposure to environment-related risks) that does not cause a response to policy or technology over the horizon. Put simply, we are identifying the climate shocks in the scenario in which climate condition and its physical risks worsen in an environment that is not protected by policy or technological efforts. Both types of shocks (pure emissions and increase in the damage due other causes than pure emissions) have very similar consequences on the economy. They both imply quite a negative effect on output and prices, including at

¹⁵In a counterfactual exercise we created the shock to environment-related technologies such that they would have no effect on the IRFs of EPSI. The effect on the macro block does not change drastically, suggesting that a the effect of technology on output and prices does not pass through the increase of policy or government investments.

Figure 10: Impulse response functions of a shock to Welfare cost of premature deaths

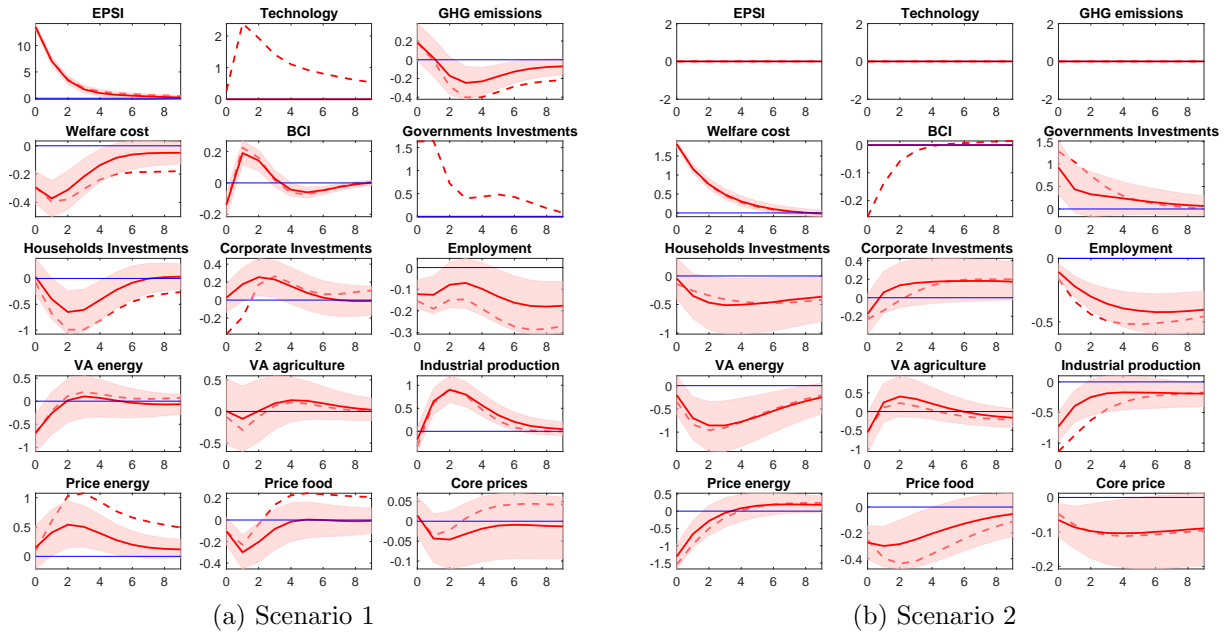


Sources: Authors' calculation; Sample: 1990-2019.

impact, that can be explained by the negative effect on expectations, private investments and employment.

Notice that a sudden increase of GHG emissions in a given year has a positive effect at impact on the damage function as defined by the welfare costs of premature deaths. This “immediate” reaction of social costs, which has a negative effect on expectations at impact and therefore compresses the economy, is not surprising on a long time span but is perfectly plausible also in the short run. Among other things, GHG emissions contribute strongly not only to global warming through the accumulation of CO₂ particles in the atmosphere, but also to local air pollution levels, which in turns have a direct effect on peoples’ health, implying a non negligible economic cost (OECD (2016)). Hence, the variable welfare costs, being by construction a measure of the economic harm in a given year due to environmental degradation (including air pollution) reacts contemporaneously to a positive shock to GHG emissions. Moreover, the fact that this shock has a negative effect on production and prices ensures that it cannot be confused with a technology shock that causes emissions to increase.

Figure 11: Counterfactual exercises, the red dashed line represents baseline IRFs



Sources: Authors' calculation; Sample: 1990-2019.

To gauge how strong the expectation channel can be, panel (b) of Figure 11 shows the responses to a shock to the welfare cost of premature deaths built such that it does not have a (negative) effect on business confidence, i.e. shutting down the response of the variable BCI. Unsurprisingly, the effect of shutting down this channel confirms the idea that if firms become more pessimistic about the future due to the impact of climate change they would reduce investments (which would be taken up by government), leading to a more disruptive effect onto output and employment.

5.2 Country-specific characteristics

So far we have documented that, in general, shocks to transition risks put an upward pressure on prices while shocks to physical risks put a downward pressure on prices and output. The aim of this section is to examine whether: (1) countries with different characteristics in terms of adaptation, mitigation, vulnerability, and exposure to both transition and physical risks are on average affected differently from a specific climate shock; and (2) there is a relationship between the magnitude of the effects found in the previous sections and some country specific characteristics. With the results in this section we aim to provide stylized facts relevant for policy makers that could potentially improve our understanding of climate shocks transmission

Table 2: Groups

Variable	Groups	Countries
Carbon pricing	no carbon tax implemented or ETS	Australia, Austria, Belgium, Czech Republic, Germany, Greece, Hungary, Republic of Korea, Netherlands, Slovakia, United States
<i>The World Bank - Carbon Pricing Dashboard</i>	carbon tax implemented	Canada (2019), Denmark (1992), Finland (1990), France (2014), Ireland (2010), Japan (2012), Norway (1991), Portugal (2015), Spain (2014), Switzerland (2008), United Kingdom (2013)
	revenue recycling	Denmark, Finland, Ireland, Norway, Sweden, Switzerland
World Risk Index	high: ≥ 3.30	Netherlands, Greece, Hungary, Italy, Ireland, Portugal, Spain, Japan, United Kingdom, Slovakia, United States, Australia
<i>UNU-EHS, IFHV Ruhr-University Bochum</i>	low: < 3.30	Austria, Czech Republic, Denmark, Belgium, Germany, Norway, France, Sweden, Switzerland, Finland, Korea, Canada
Natural disasters, % population affected	high	Australia, Czech Republic, France, Greece, Hungary, Italy, Japan, Korea, Netherlands, Portugal, Slovakia, Spain, United Kingdom, United States
<i>EM-DAT database</i>	low	Sweden, Denmark, Finland, Belgium, Switzerland, Ireland, Norway, Germany, Canada, Austria
Gross National Income, US dollars/capita, 2019	high: $> 57K$	Norway, Switzerland, Ireland, United States, Denmark, Netherlands, Austria, Germany
	medium	Sweden, Belgium, Australia, Finland, Canada, France, United Kingdom
<i>OECD.stat</i>	low: $< 47K$	Italy, Japan, Korea, Spain, Czech Republic, Portugal, Slovakia, Greece, Hungary
Political Economy	nordic	Finland, Sweden, Denmark, Norway
	continental	Austria, Belgium, Germany, Czech Republic, France, Netherlands, Slovakia, Switzerland, Hungary, Korea, Japan
	mediterranean	Spain, Portugal, Greece, Italy
	liberal	United States, United Kingdom, Canada, Australia, Ireland

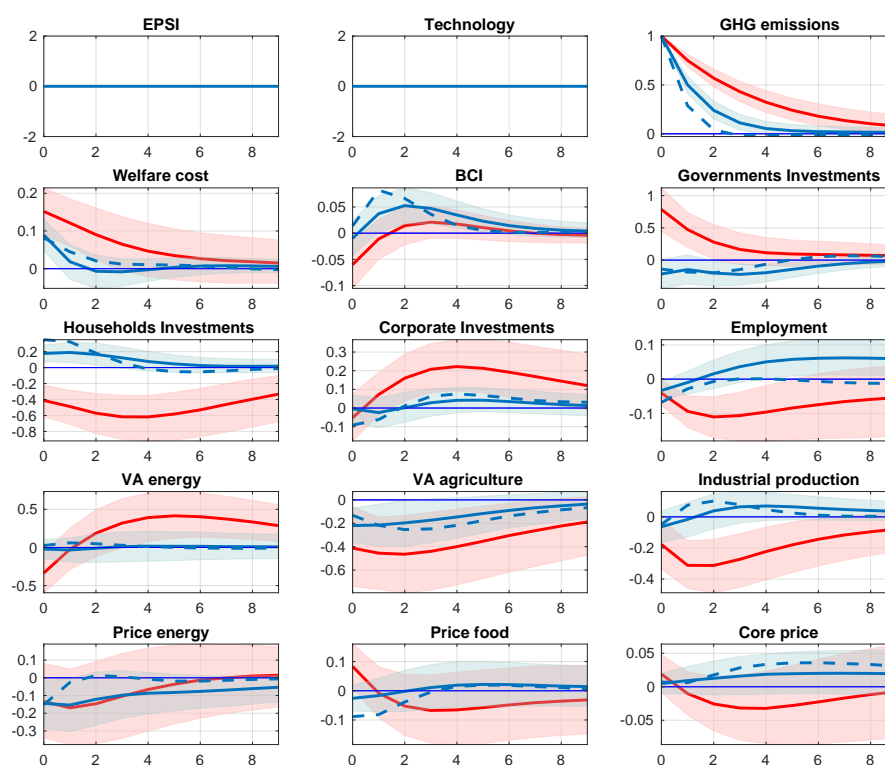
to the global economy.

The enlarged VAR model is estimated by groups of countries homogeneously chosen based on a priori common specific features. The composition of the groups depends on a selection of country characteristics over the entire sample 1990-2020 related to climate, institutional, and geographical key features. Table 2 illustrates the different groups. The model is estimated by pooling the data for each selected subset of countries and the responses are normalized such that each IRF is divided by the standard deviation of the variable that we shock, for the sake of comparability across groups.

5.2.1 Carbon Pricing

Carbon taxes are widely considered as a potential cost-effective approach to reducing GHG emissions and an economically efficient policy instrument for de-carbonizing the energy supply and limit global warming. Its limited adoption (see Table 2) is explained by the several concerns over its negative effects on the economy (growth, income distribution, competitiveness) unless an

Figure 12: Impulse response functions of a shock to GHG emissions



Sources: Authors' calculation; Sample: 1990-2019.

Note: The red line indicates countries that didn't adopt a carbon tax; the blue line is for countries with a carbon tax implemented (1990-2019); the blue dashed line is for countries that do revenue recycling.

efficient revenue recycling is adopted (Braennlund and Gren (1999)). As argued in Section 3 and illustrated in Figure 4, the 24 countries in the analysis had a different evolution of climate policies during the 30 years of our sample, with some countries preferring technological innovation to putting a tax on carbon emissions. The questions we ask, therefore, are: how does the adoption of a carbon tax change the macroeconomic effects of climate-related shocks? and, what if revenues from carbon taxation are earmarked for spending that benefits citizens?

Figure 12 shows the IRFs to a climate shock that increases emissions computed by running the extended VAR for three sets of countries: (i) countries that did not adopt a carbon tax in the time span of our analysis (red line); (ii) countries that implemented a carbon tax (blue line); and (iii) countries that adopt a recycling of tax revenues or appropriate compensation measures (blue dotted line).

Accounting for country heterogeneity given by the application and use of a carbon tax qualifies substantially the baseline results along four clear dimensions. First, after the same

initial shock, the response of GHG emissions is much lower and less persistent in countries that have a carbon tax and (even more) in countries that recycle its revenue. This implies a significantly lower damage cost in terms of welfare loss. Second, countries with a carbon tax have a significantly higher confidence in near future business performance than countries without a carbon tax, which are actually pessimistic towards future performance. Third, with a carbon tax there seems to be no need for government to increase its investment in order to counteract the climate shock. As a consequence, the household's investment is not crowded-out any longer. Instead, households investments seem to be encouraged in countries with a carbon tax and even more so in those who recycle the revenues. Fourth, an increase in emissions is much less disruptive for the macroeconomy in countries with a carbon tax: (i) employment does not suffer and if anything it can even increase slightly; (ii) industrial and agricultural productions are also significantly less negative or slightly positive; and (iii) prices do not show a sustained and significant negative impact. Overall, this seems to indicate that if a carbon tax is in place, a climate shock does not correspond any longer to a negative demand-type shock that would otherwise be predominant as discussed in Section 4.

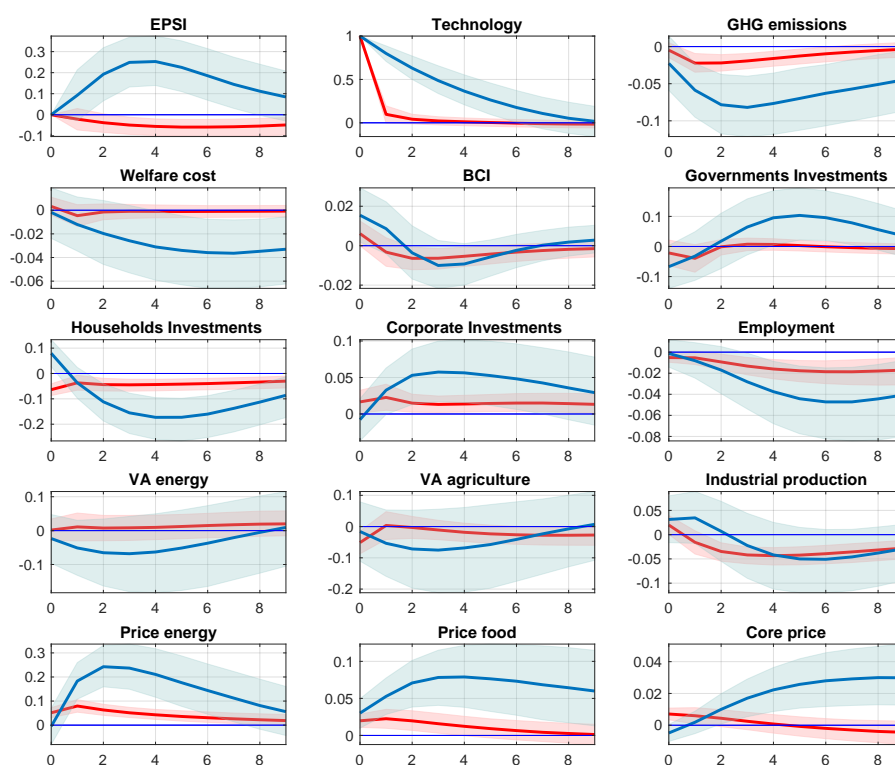
If we look at a shock to policy stringency and split the groups according to the same criterion (carbon tax-no carbon tax) we reach very similar conclusions (see Appendix, Figure A.2). In particular, (i) the response of confidence is highest in countries that do revenue recycling; (ii) public investments do not crowd out households' ones; (iii) we do not observe a persistent net job destruction; and (iv) the price of energy increases much more for countries with carbon tax because it implies that firms have to face an even tighter price on polluting. But if tax revenues are recycled this increase is not so high and long-lasting anymore while the impact on core prices is even negative. These results on employment and revenue recycling are consistent with [Metcalf and Stock \(2020\)](#) and [Braennlund and Gren \(1999\)](#).

5.2.2 Gross National Income

Climate change and level of income are certainly intertwined because climate change can affect low-income communities and developing countries more than advanced economies due not only to the increased exposure and vulnerability of the former but also to the better preparedness of the latter in terms of either mitigation policies or existing innovative solutions ([Jay et al. \(2018\)](#)).

Given that in our sample we only have OECD countries and that the difference between

Figure 13: Impulse response functions of a shock to Technology



Sources: Authors' calculation; Sample: 1990-2019.

Note: The two groups of countries are low income (red line) and high income (blue line);

low and high income countries is not huge, grouping the results according to income will give us an accurate idea on the different macroeconomic impacts of climate-related shocks between countries that have already in place good structures to mitigate climate or adapt their technology and countries that are not yet prepared.

For instance, Figure 13 reports the impulse responses to a shock to non policy-induced innovations for low (red) and high (blue) income countries. Several differences are noticeable. First, the same shock to technology is much more persistent in countries that are already prepared to receive additional technology. Second, this in turn implies that in better-prepared countries an increase in technology can be paired with a more stringent policy and with a much higher reductions of emissions and of the damage costs. Third, from a macroeconomic perspective, government and corporate investments are higher in high-income countries and these investments crowd-out households investment more than in low-income countries. Fourth, labor market adjustment to new climate technology and policies imply a more negative effect on employment in

high-income countries. Finally, the negative effect on output in energy and agriculture sectors is more pronounced in high-income countries, while the industrial production is more or less unchanged over the medium-term (with an initial positive response). Note also that the positive effect on prices that we saw in the baseline results is much stronger for the high income countries, confirming a strong supply-side effect of an innovation shock in countries that are supposedly better prepared to receive it.

5.2.3 Exposure to natural disasters

Natural disasters (also those related to climate change) have a directly observable negative impact on the macroeconomy, especially in the short-run. As discussed in Section 3.1, we have decided not to use a direct measure of climate-related natural disasters or extreme weather events in the VAR and rather preferred a more medium-run orientation in the choice of the variables. However, the relative exposure of countries and their vulnerability to natural disasters and extreme weather events is an important dimension of country heterogeneity to account for. Therefore in this section we check if certain shocks have different impacts on countries with different degree of vulnerability.

To define this exposure, we rely on two measures: 1) the intensity of natural disasters in the time span 1990-2019, and 2) the World Risk Index. The variable called “intensity of natural disasters” is built following Parker (2018)¹⁶ using data coming from the *EM-DAT database* of natural disasters.¹⁷ Alongside with the data and the type of disaster, the database reports information on the number of people killed and the number of people affected. We selected disasters that are most commonly attributed to climate change such as: meteorological, hydrological and climatological disasters (see table 3 for the classification of natural disasters). To form the groups we divided countries into high and low intensity of natural disaster, based on their average population affected from 1990 to 2019.

Regarding the World Risk Index (WRI), this variables developed by UNU-EHS describes the disaster risk for various countries and regions and is part of a bigger publication, the World Risk Report (Day et al. (2019)).¹⁸ The report focuses on the threats from and the exposure

¹⁶With the difference that for each country we aggregate all the types of disasters that happened each year

¹⁷The data are collected by the Centre for Research on the Epidemiology of Disasters at the Université Catholique de Louvain

¹⁸Sources: United Nations University’s Institute for Environment and Human Security (UNU-EHS), Institute for International Law of Peace and Armed Conflict (IFHV) of Ruhr-University Bochum.

Table 3: Classification of natural disasters

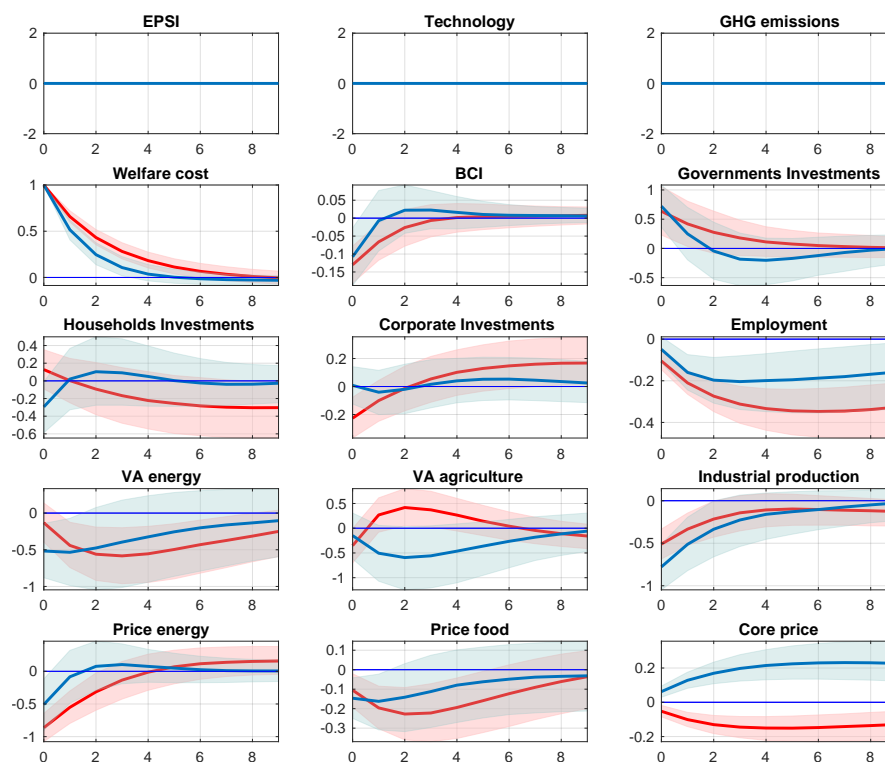
Disaster group	Disaster sub-group (type)
Meteorological	Storm (tropical storm, extra-tropical storm, convective storm), Extreme temperatures (cold wave, heat wave, severe winter conditions), Fog
Hidrological	Flood (coastal flood, riverine flood, flash flood, Ice jam flood), Landslide (snow, debris, mudflow, rock fall), Wave action (rogue wave, seiche)
Climatological	Drought, Glacial Lake outburst, Wildfire (forest fires, land fire)

to key natural hazards and the rise in sea level caused by climate change, as well as social vulnerability in the form of the population's and societies' susceptibility and their capacity for coping and adapting to climate change. The WorldRiskIndex shows the level of risk of disaster due to extreme natural events for 181 of the world's countries. It is calculated on a country-by-country basis through the product of exposure and vulnerability. Exposure covers threats of the population due to natural disasters. Vulnerability entails the societal sphere and is comprised of three components: susceptibility, coping and adaptation.¹⁹ For the sake of brevity we report here only the results for intensity of natural disasters (see Figure A.3 and A.4 in the Appendix, for results with WRI).

Results to a shock to the welfare cost are reported in Figure 14 where we plot the impulse responses of highly (red) and lowly (blue) exposed countries (IRFs to the same shock using the WRI are in the Appendix, Figure A.3). Note that the response of the welfare variables itself is less persistent for countries that are less exposed to natural disasters or have a lower value of the world risk index. Moreover, the business confidence indicator and employment are less negative and persistent for less vulnerable countries. Finally, the demand-side effect of the climate shock (with a strong negative effect on core prices) is mostly for countries with a high exposure to natural disasters and a higher vulnerability to them. Interesting to notice here is that even though the two groupings – high exposure to disasters and high WRI – have different sets of countries this result is the same for the two groups. Countries with a high exposure to natural disasters are intended in terms of both their historical exposure in the last 30 years and in terms of their vulnerability, susceptibility as well as their adaptive capacity. Hence, these results suggest that for countries at high risk (which, interestingly enough, are also for the majority low-income countries), an additional positive shock to the cost that society has to pay

¹⁹the composition of the index is described in greater details in the methodological notes available at www.WorldRiskReport.org/#data.

Figure 14: Impulse response functions of a shock to Welfare cost of premature deaths



Sources: Authors' calculation; Sample: 1990-2019.

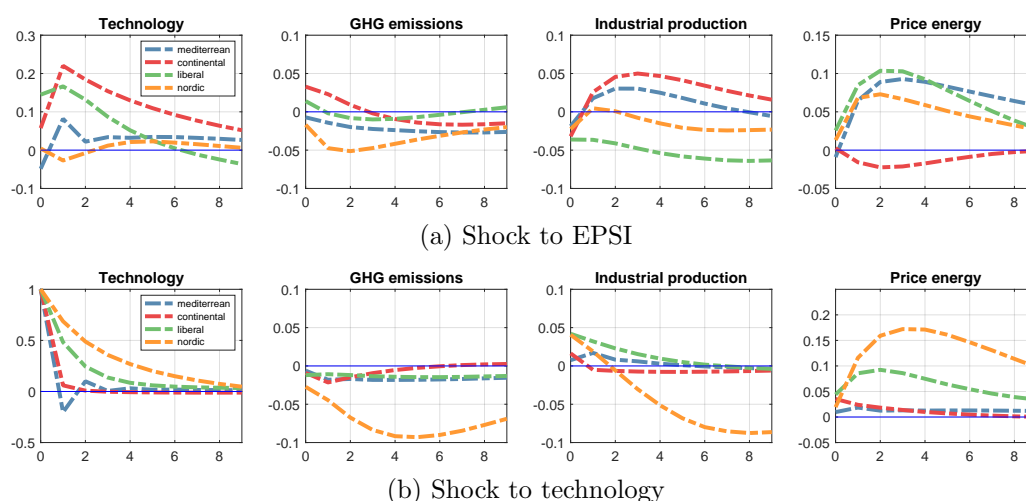
Note: The red line indicates countries with a high average percentage of population affected by natural disasters (1991-2019)

due to environmental degradation has a more disruptive effect on the macroeconomy than for countries with lower risks, reinforcing the negative demand-type shock showed in the baseline results. Similar negative results for output and employment are found by [Kim et al. \(2021\)](#) when analysing the macroeconomic effects of extreme weather shocks. Furthermore, these results are also consistent with recent work by [Canova and Pappa \(2021\)](#) who find that lower-income US states may be more severely hit by the catastrophic events. A possible explanation could be that in lower income states (or in our case countries) physical risks affect a bigger portion of their economic activity or alternatively because they lack the needed infrastructures or suitable private and public insurance schemes.

5.2.4 Political Economy and institutions: Liberal, Continental, Mediterranean and Nordic countries

For a final country grouping we consider the same geopolitical characteristics used in Section 3 to illustrate some data differences across countries. In this section we ask whether the macroeconomic impacts of climate-related shocks differ across countries with different geopolitical characteristics or institutional approaches to climate change (Driscoll (2020)) see Table 2 for details on the classification.

Figure 15: IRF of industrial production and prices to EPSI and Technology, geopolitical classification



Sources: Authors' calculation; Sample: 1990-2019.

Results are reported in Figure 15, which plots the IRFs of technology, GHG emissions, industrial production and energy price levels to shocks to the policy stringency index and the technological innovation. Results can be summarised as follows. A shock to stringency is interpreted as a shock to environmental policies and policy-induced innovation. Looking at the responses to a shock of technology it is possible to have a hint on what type of policy mix the different countries have adopted. Looking at panel (a) of Figure 15 it stands out the difference in the responses of continental and Nordic countries. For the first group of countries a shock to EPSI is a boost to environmental technologies, while for the latter technology almost does not react. Furthermore, a shock to policy that is translated in more innovative green technologies also represents a boost to production and has almost a negligible effect on energy prices in continental countries. For these countries – which have historically invested more in environmental technologies – results seems to suggest that in the policy mix between demand-

pull policies (that tend to increase prices) and technology-push policies (that give support to technological development and diffusion), the latter are predominant. This would also justify the slower decrease in carbon emissions observed for this group of countries.

On the other end, as shown by panel (b) of Figure (15), a shock to non-policy-induced technology accentuates its negative supply effects for Nordic countries that have a history of climate policies and high taxation but didn't invest much in technology. Overall these results provide evidence of an unbalanced and not uniform policy mix adopted by different countries, which invest either in demand-pull policies or technology-push ones. On the other hand, green technological development that is not supported by the right policy mix, may result in market failures that have different sizes for different countries.

An alternative explanation to these results (that certainly need more exploration) is that continental countries (in general with more technology and medium income) absorb better a policy shock, but the opposite is not true for countries that have a history of significant environmental policy where a shock to technology is more disruptive for their economy.

6 Concluding remarks

This paper provides an empirical exploration of the macroeconomic effects of climate-related events and climate policies. Its main contribution is twofold: First, we take a business cycle perspective and focus on the “gradual” impact of climate-related risks (both physical and transition), as opposed to considering either the very long run effects of climate change or the immediate impacts of natural disasters possibly caused by it. Second, to the best of our knowledge this is the first empirical attempt to include the interrelated effects of both physical and transition risks and test their economic consequences within a standard framework that combines exposure and vulnerability to climate change and environmental degradation, climate mitigation policies and adaptation technologies. In so doing we select carefully the variables that proxy for adaptation, mitigation and damage using a panel of 24 OECD countries over the period 1990-2020.

The paper shows that climate changes and policies to counteract them have a significant albeit not sizeable effect on the macroeconomy over a horizon between 2 and 8 years. In particular, the data of this analysis robustly support the view that the impact on output and prices of physical risks is overall negative whereas the final impact of policies and technology is positive

on prices and negative on output. Therefore, physical risks are associated with demand-type of shocks while transition policies and technological improvement are more consistent with supply adjustments. Results also differ according to specific country institutional and economic characteristics as well as their different degrees of exposure to risks and vulnerabilities. Notably, in countries that have adopted a carbon tax and recycle its revenues, as well as in countries that have been adapting their institutions or are less vulnerable to climate or general risks, the disruptive effects of climate change and of the introduction of new policies or technologies to mitigate them are much more contained.

These results support the need for a uniform policy mix to counteract climate change with a balance between demand-pull and technology-push policies that help limit the disruptive effects on the economy in the short-to-medium run. Overall, green technological development that is not supported by the right policy mix may result in market failures that have different sizes for different countries with heterogeneous consequences on the phases and duration of their respective cycles. A coordinated approach on climate policies would therefore be essential for instance in a monetary union with common monetary and financial objectives. Climate change and the transition towards a more sustainable economy can affect price and financial stability through their impact on macroeconomic indicators, becoming a “threat” to business cycle synchronization among union members and, therefore, an additional constraint for the central bank’s monetary policy strategy, as also recently acknowledged by e.g. the [European Central Bank](#) (2021).

References

- Andersson, M., Baccianti, C., and Morgan, J. (2020). Climate change and the macro economy. Occasional Paper Series 243, European Central Bank.
- Baldauf, M. and Lorenzo Garlappi, C. Y. (2020). Does Climate Change Affect Real Estate Prices? Only If You Believe In It. *The Review of Financial Studies*, 33(3):1256–1295.
- Bandara, J. S. and Cai, Y. (2014). The impact of climate change on food crop productivity, food prices and food security in south asia. *Economic Analysis and Policy*, 44(4):451 – 465.
- Batini, N., Serio, M. D., Fragetta, M., Melina, G., and Waldron, A. (2021). Building back better: How big are green spending multipliers? *IMF Working Papers*, 2021(087):A001.
- Batten, S. (2018). Climate change and the macro-economy: A critical review (january 12, 2018). Working Paper 706, Bank of England.
- Batten, S., Sowerbutts, R., and Tanaka, M. (2020). *Climate Change: Macroeconomic Impact and Implications for Monetary Policy*, pages 13–38.
- Bañbura, M., Giannone, D., and Reichlin, L. (2010). Large bayesian vector auto regressions. *Journal of Applied Econometrics*, 25(1):71–92.
- Botta, E. and Kozluk, T. (2014). Measuring environmental policy stringency in oecd countries: A composite index approach. OECD Economics Department Working Papers 1177, OECD Publishing.
- Braennlund, R. and Gren, I. (1999). *Green taxes: economic theory and empirical evidence from Scandinavia*. United Kingdom: Edward Elgar Publishing.
- Brunel, C. (2019). Green innovation and green imports: Links between environmental policies, innovation, and production. *Journal of Environmental Management*, 248:109290.
- Burke, M. and Hsiang, S. (2015). Global non-linear effect of temperature on economic production. *Nature*, 527.
- Burke, M. and Tanutama, V. (2019). Climatic constraints on aggregate economic output. Working Paper 25779, National Bureau of Economic Research.

- Canova, F. and Ciccarelli, M. (2013). Panel vector autoregressive models: A survey. In Fomby, T. B., Kilian, L., and Murphy, A., editors, *VAR Models in Macroeconomics – New Developments and Applications: Essays in Honor of Christopher A. Sims*, volume 32 of *Advances in Econometrics*, pages 205–246. Emerald Group Publishing Limited.
- Canova, F. and Pappa, E. (2021). Costly disasters and the role of fiscal policy. mimeo.
- Cavallo, A., Cavallo, E., and Rigobon, R. (2014). Prices and supply disruptions during natural disasters. *Review of Income and Wealth*, 60(S2):S449–S471.
- Chudik, A. and Pesaran, M. H. (2016). Theory and practice of gvar modelling. *Journal of Economic Surveys*, 30(1):165–197.
- Costantini, V., Crespi, F., and Palma, A. (2017). Characterizing the policy mix and its impact on eco-innovation: A patent analysis of energy-efficient technologies. *Research Policy*, 46(4):799–819.
- Day, J. et al. (2019). World risk report 2019. Report, Bündnis Entwicklung Hilft and Ruhr University Bochum – Institute for International Law of Peace and Armed Conflict (IFHV).
- Deryugina, T. and Hsiang, S. M. (2014). Does the environment still matter? daily temperature and income in the united states. Working Paper 20750, National Bureau of Economic Research.
- Donadelli, M., Jüppner, M., Riedel, M., and Schlag, C. (2017). Temperature shocks and welfare costs. *Journal of Economic Dynamics and Control*, 82(C):331–355.
- Driscoll, D. (2020). Do carbon prices limit economic growth? *Socius: Sociological Research for a Dynamic World*, 6:1–3.
- Economides, G. and Xepapadeas, A. (2018). Monetary Policy under Climate Change. CESifo Working Paper Series 7021, CESifo.
- European Central Bank (2021). Ecb presents action plan to include climate change considerations in its monetary policy strategy. 8 July 2021, Press Release.
- Franco, C. and Marin, C. (2015). The effect of within-sector, upstream and downstream environmental taxes on innovation and productivity. *Environmental and Resource Economics*, 66(2):261–291.

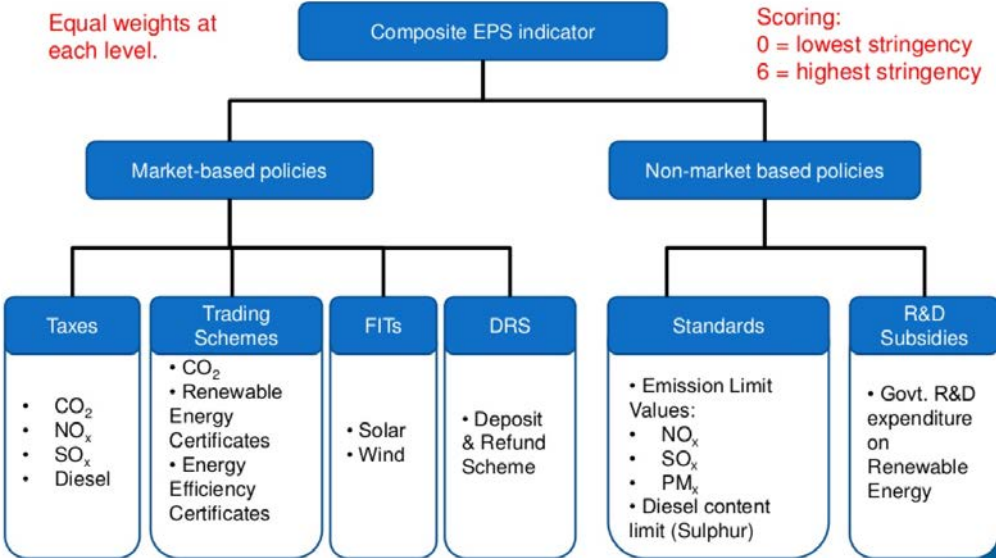
- GBD (2019). Global burden of 87 risk factors in 204 countries and territories, 1990–2019: a systematic analysis for the global burden of disease study 2019. *The Lancet*, 396(10258):1223–1249.
- Gillingham, K. and Stock, J. H. (2018). The Cost of Reducing Greenhouse Gas Emissions. *Journal of Economic Perspectives*, 32(4):53–72.
- Haščič, I., Rodríguez, M. C., Jachnik, R., Silva, J., and Johnstone, N. (2015). Public Interventions and Private Climate Finance Flows: Empirical Evidence from Renewable Energy Financing. OECD Environment Working Papers 80, OECD Publishing.
- Heinen, A., Khadan, J., and Strobl, E. (2018). The price impact of extreme weather in developing countries. *The Economic Journal*, 1258.
- IMF (2020). World economic outlook, october 2020: A long and difficult ascent. Chapter 3: Mitigating climate change, International Monetary Fund.
- IPCC (2014). Climate change 2014: Synthesis report. *Contribution of Working Groups I, II and III to the Fifth Assessment Report of the Intergovernmental Panel on Climate Change*, IPCC, Geneva, Switzerland, 151 pp.
- IPCC (2018). Global warming of 1.5°: Special report. IPCC, Geneva, Switzerland.
- Jay, A. et al. (2018). Overview. In Reidmiller, D., Avery, C. W., Easterling, D., Kunkel, K., Lewis, K., Maycock, T., and Stewart, B., editors, *Impacts, Risks, and Adaptation in the United States: Fourth National Climate Assessment*, volume 2, pages 37–71. U.S. Global Change Research Program, Washington, DC, USA.
- Kahn, M. E., Mohaddes, K., Ng, R. N. C., Pesaran, M. H., Raissi, M., and Yang, J.-C. (2019). Long-term macroeconomic effects of climate change: A cross-country analysis. CESifo Working Paper 7738, Munich.
- Kamber, G., McDonald, C., and Price, G. (2013). Drying out: Investigating the economic effects of drought in new zealand. Analytical Note Series AN/02, Reserve Bank of New Zealand.
- Keen, B. and Pakko, M. (2009). Monetary policy and natural disasters in a dsge model: How should the fed have responded to hurricane katrina? Federal Reserve Bank of St. Louis, Working Paper, 2007-025.

- Kim, H. S., Matthes, C., Phan, T., and and (2021). Extreme weather and the macroeconomy. *Federal Reserve Bank of Richmond Working Papers*, 21(14):1–31.
- McKibbin, W. J., Morris, A. C., Wilcoxon, P. J., and Panton, A. J. (2021). Climate change and monetary policy: issues for policy design and modelling. *Oxford Review of Economic Policy*, 36(3):579–603.
- Metcalfe, G. E. and Stock, J. H. (2020). Measuring the macroeconomic impact of carbon taxes. *AEA Papers and Proceedings*, 110:101–06.
- Mountford, A. and Uhlig, H. (2009). What are the effects of fiscal policy shocks? *Journal of Applied Econometrics*, 24(6):960–992.
- Mumtaz, H. and Alessandri, P. (2021). The macroeconomic cost of climate volatility. Working paper, Available at SSRN: <https://ssrn.com/abstract=3895032h>.
- Nemet, G. (2009). Demand-pull, technology-push, and government-led incentives for non-incremental technical change. *Research Policy*, 38(5):700–709.
- NGFS (2020a). Climate change and monetary policy: Initial takeaways. Technical document, Network for Greening the Financial System.
- NGFS (2020b). The macroeconomic and financial stability impacts of climate change: Research priorities. Technical document, Network for Greening the Financial System.
- Niu, T., Yao, X., Shao, S., Li, D., and Wang, W. (2018). Environmental tax shocks and carbon emissions: An estimated dsge model. *Structural Change and Economic Dynamics*, 47:9–17.
- OECD (2012). Mortality risk valuation in environment, health and transport policies. OECD Publishing, Paris.
- OECD (2016). The economic consequences of outdoor air pollution. OECD Publishing, Paris.
- OECD (2020). Environment at a glance. OECD Publishing, Paris.
- Parker, M. (2018). The Impact of Disasters on Inflation. *Economics of Disasters and Climate Change*, 2(1):21–48.
- Pesaran, M. and Smith, R. (1995). Estimating long-run relationships from dynamic heterogeneous panels. *Journal of Econometrics*, 68(1):79–113.

- Popp, D. (2019). Environmental policy and innovation: A decade of research. Working Paper 25631, National Bureau of Economic Research.
- Rebucci, A. (2010). Is growth exogenous? evidence from the 1970s and 1980s. *Applied Economics*, 42(5):535–543.
- Roy, R. and Braathen, N. (2017). The rising cost of ambient air pollution thus far in the 21st century. *OECD Environment Working Papers*, (124).
- Schaub, S. and Finger, R. (2020). Effects of drought on hay and feed grain prices. *Environmental Research Letters*, 15(3):034014.
- Sokolov-Mladenović, S. and Mladenović, S. C. . I. (2016). R&d expenditure and economic growth: Eu28 evidence for the period 2002–2012. *Economic Research-Ekonomska Istraživanja*, 29(1):1005–1020.
- Winne, J. D. and Peersman, G. (2019). The Impact of Food Prices on Conflict Revisited. Working Papers of Faculty of Economics and Business Administration, Ghent University, Belgium 19/979, Ghent University, Faculty of Economics and Business Administration.
- Wong, S., Chang, Y., and Chia, W.-M. (2013). Energy consumption, energy r&d and real gdp in oecd countries with and without oil reserves. *Energy Economics*, 40:51–60.

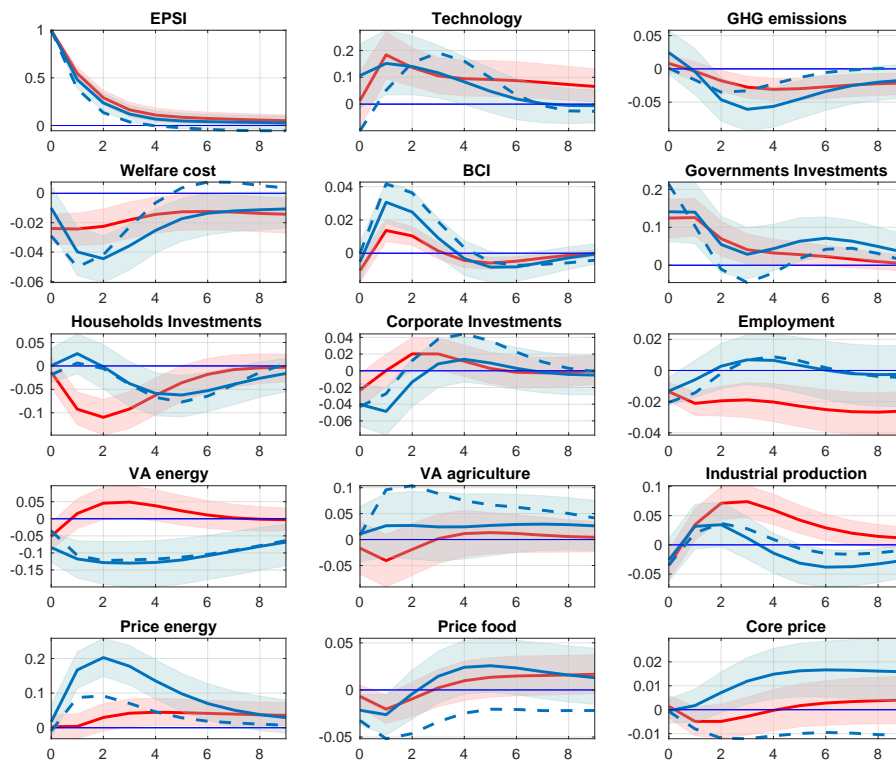
A Appendix

Figure A.1: EPS indicator structure:the policy-induced (implicit and explicit) cost of polluting faced by firms



Sources: Source: OECD: Do environmental policies matter for productivity growth? Albrizio, S.,E. Botta, T. Kozluk and V. Zipperer (2014);

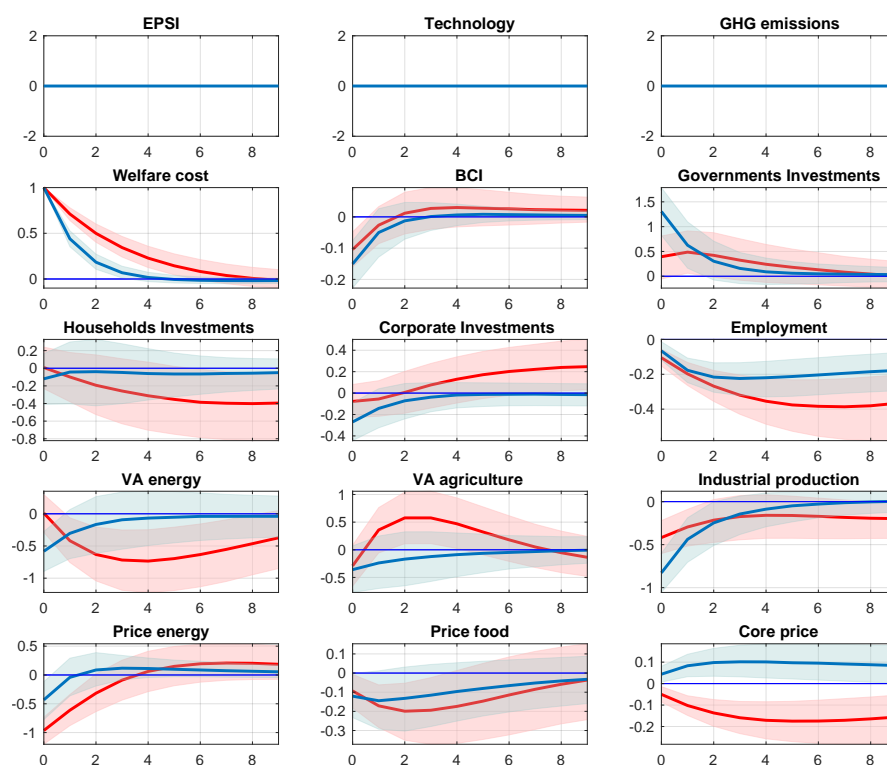
Figure A.2: Impulse response functions of a shock to EPSI



Sources: Authors' calculation; Sample: 1990-2019.

Note: The red line indicates countries that didn't adopt a carbon tax; the blue line is for countries with a carbon tax implemented (1990-2019); the blue dashed line is for countries that do revenue recycling.

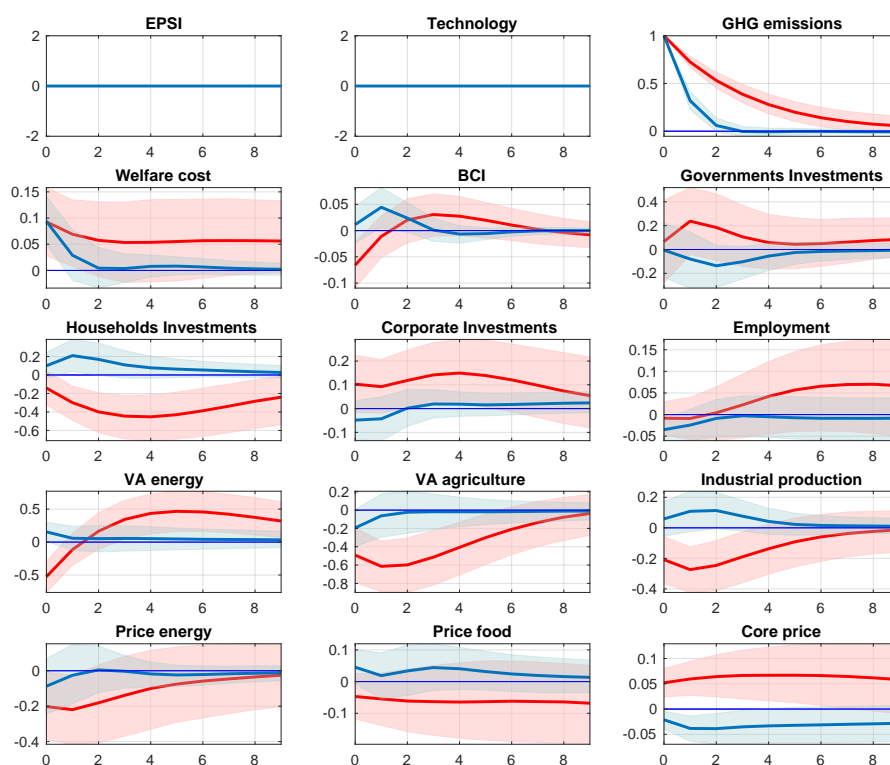
Figure A.3: Impulse response functions of a shock to Welfare cost of premature deaths



Sources: Authors' calculation; Sample: 1990-2019.

Note: The red line indicates countries with a high World Risk Index (2019)

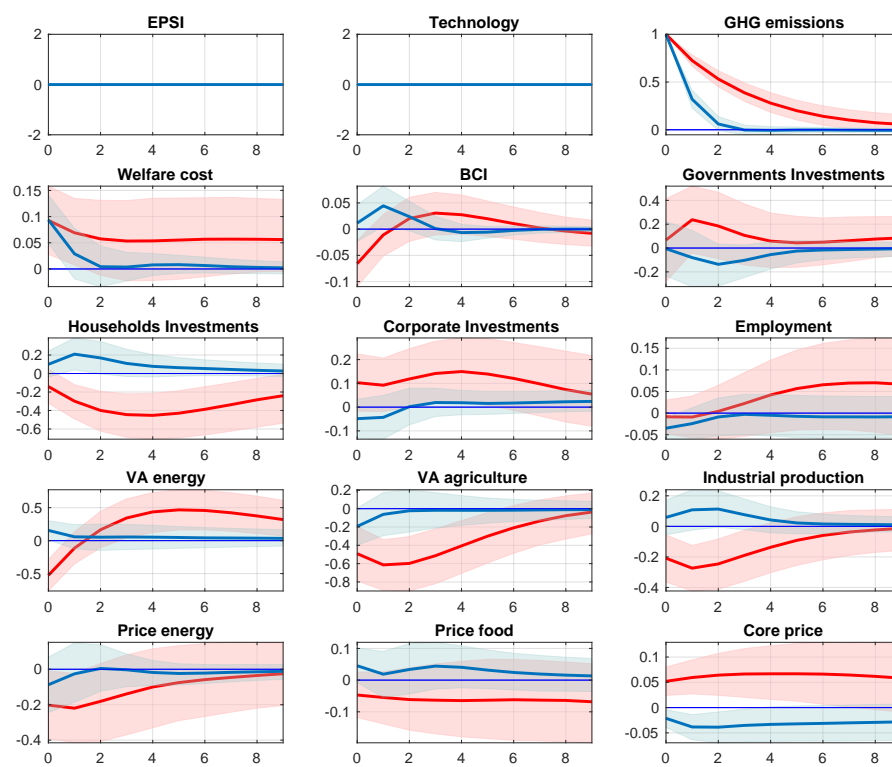
Figure A.4: Impulse response functions of a shock to GHG emissions



Sources: Authors' calculation Sample: 1990-2019

Note: The red line indicates countries with a high World Risk Index (2019)

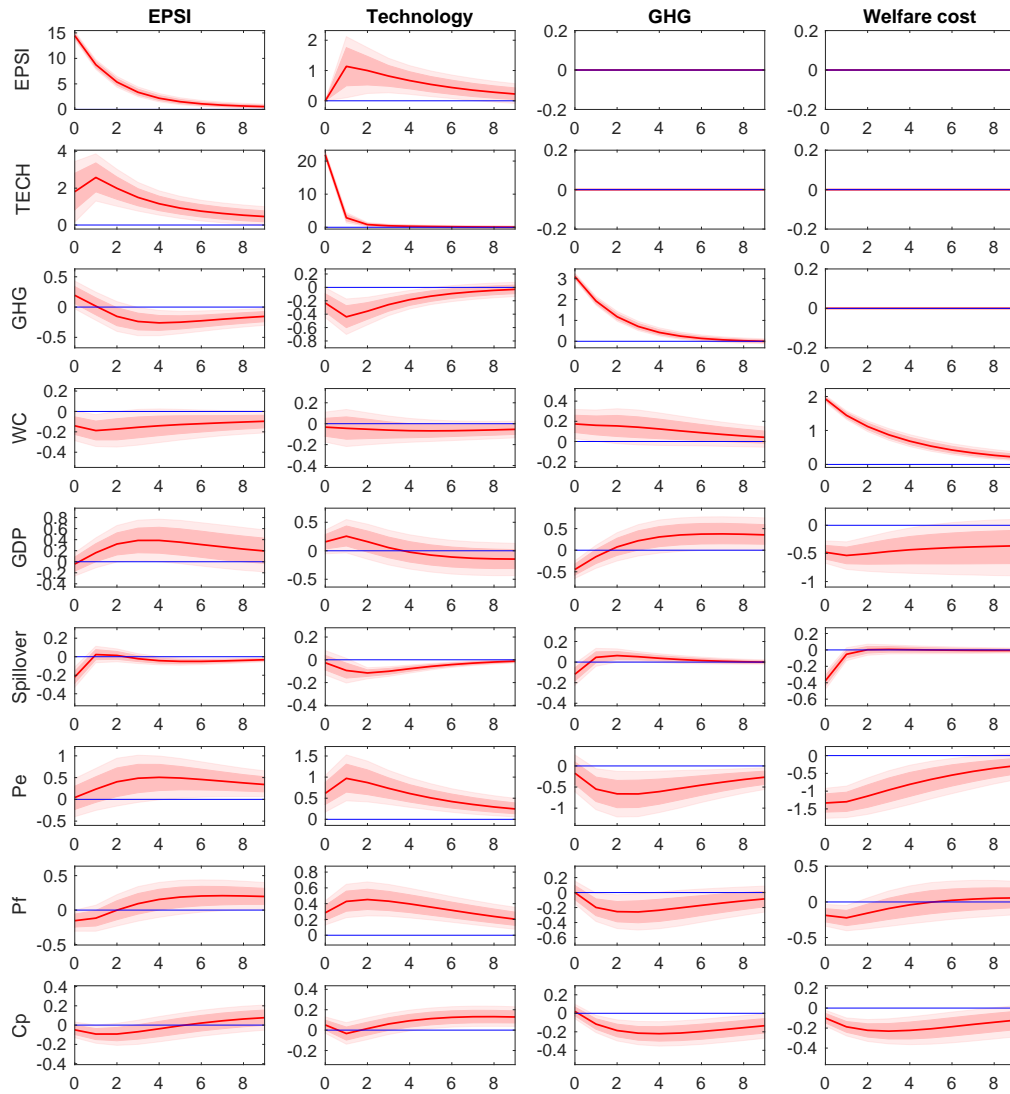
Figure A.5: Impulse response functions of a shock to GHG emissions



Sources: Authors' calculation; Sample: 1990-2019.

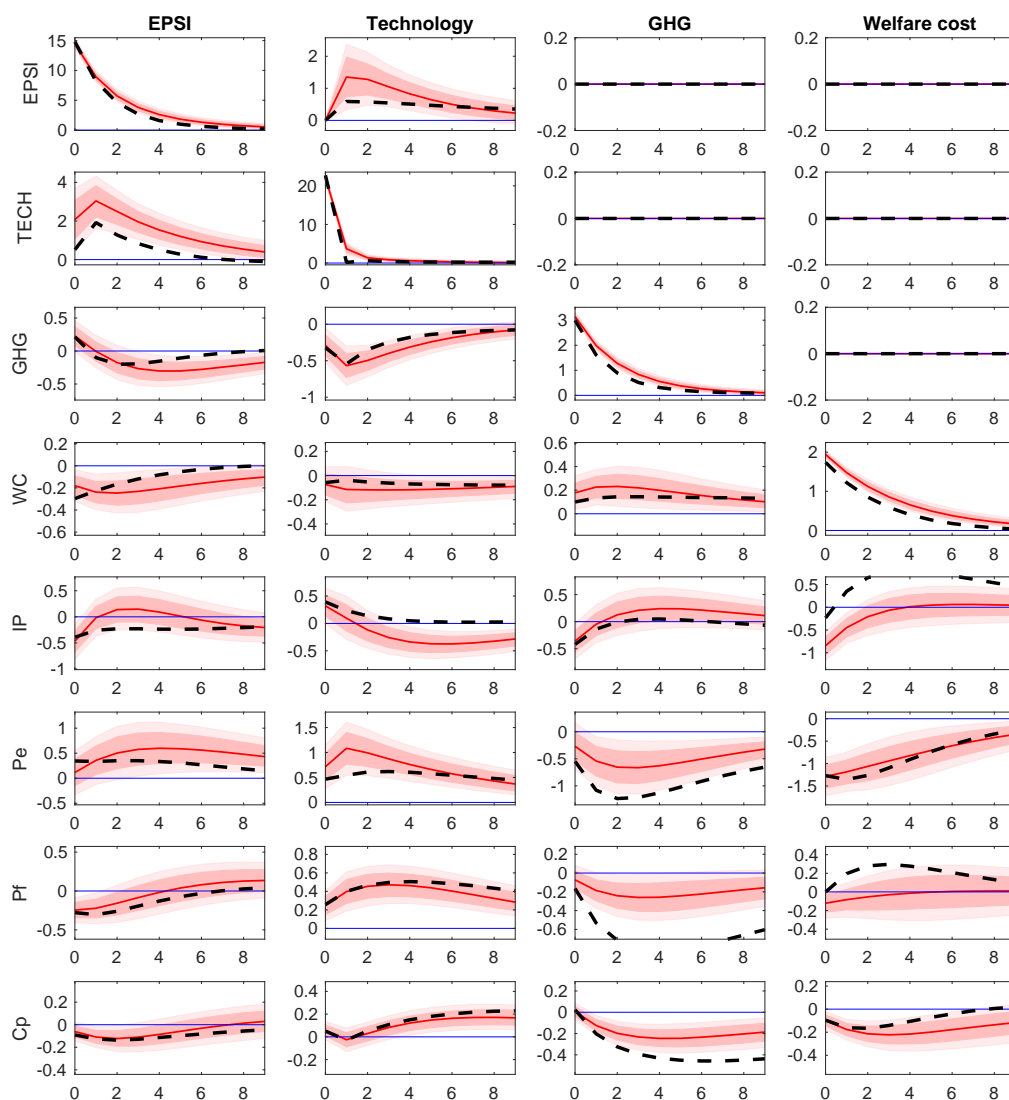
Note: The red line indicates countries with a high percentage of population affected by natural disasters (1990-2019)

Figure A.6: Baseline results, cross-country correlation



Sources: Authors' calculation; Sample: 1990-2019.

Figure A.7: Baseline results, full sample vs sample 1990-2008 (before crisis)



Sources: Authors' calculation; Sample: 1990-2008.

Note: The black dashed line represent the median of the IRF of the model estimated in the first half of the sample (1990-2008)

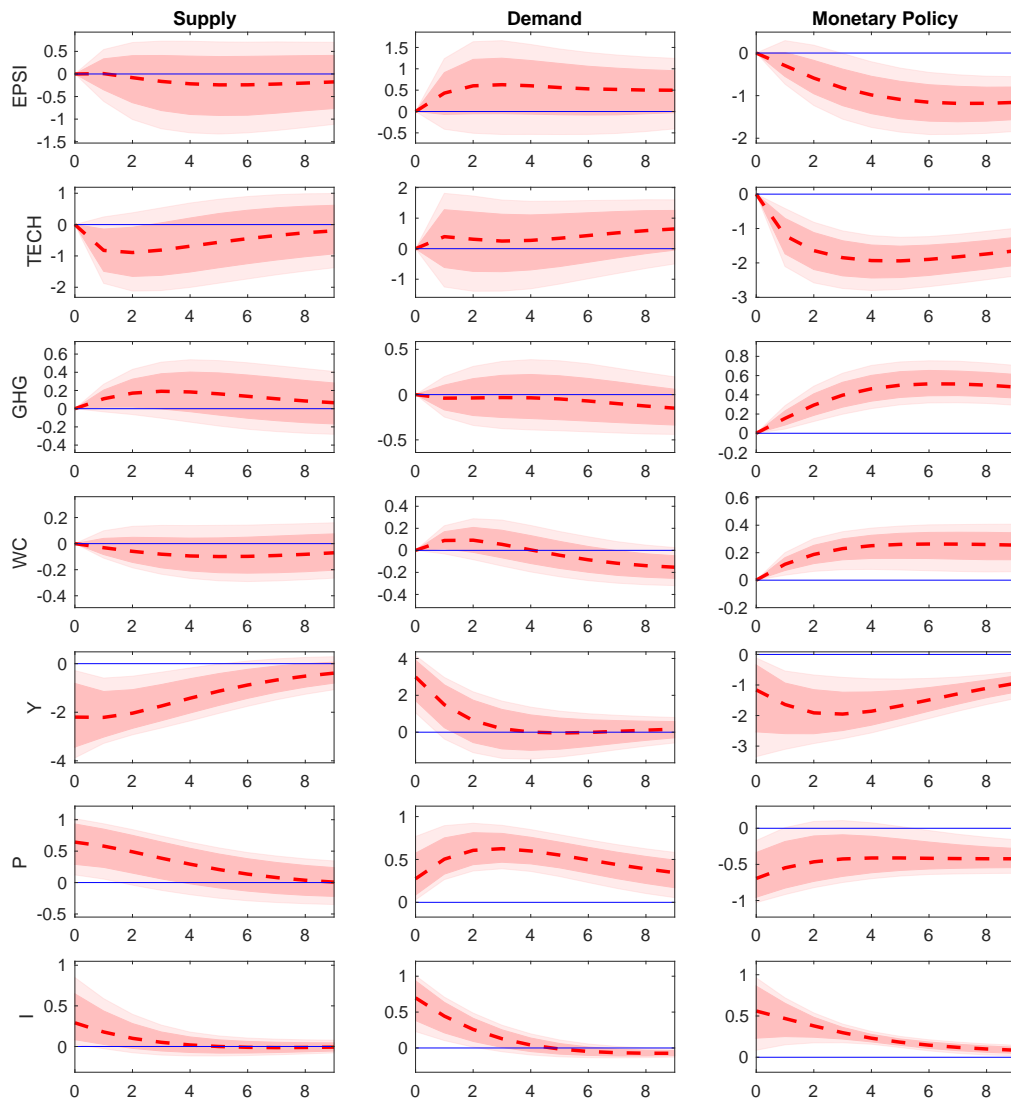
Table 4: Variance decomposition, baseline results (sample 1990-2008)

		EPSI	TECH	GHG	WC	IP	Pe	Pf	Cp
<i>EPSt</i>	1 y	100.00	0.15	0.52	2.75	1.39	0.48	1.78	0.69
	5 y	92.60	1.34	1.30	2.85	1.29	0.86	1.54	1.57
	10 y	87.15	1.36	1.34	2.61	1.65	1.01	1.26	1.25
<i>TECH_t</i>	1 y	0.00	99.85	1.15	0.18	1.31	0.87	1.53	0.26
	5 y	0.43	85.91	3.95	0.46	0.86	2.27	4.88	0.96
	10 y	0.71	83.22	3.87	0.86	0.84	3.00	5.87	2.89
<i>GHG_t</i>	1 y	0.00	0.00	98.09	0.33	1.54	1.15	0.63	0.14
	5 y	0.00	0.00	84.04	1.53	0.97	8.17	10.54	10.01
	10 y	0.00	0.00	76.01	2.77	1.03	10.00	13.56	16.04
<i>WC_t</i>	1 y	0.00	0.00	0.00	96.36	0.47	6.24	0.11	0.76
	5 y	0.00	0.00	0.00	90.03	5.57	9.90	1.47	1.91
	10 y	0.00	0.00	0.00	81.11	9.32	8.89	1.42	1.42

Table 5: Sign restrictions for identification of climate and aggregate macro shocks

	Climate Shocks				Supply	Demand	Monetary Policy
	EPSI	TECH	GHG	WC	Y	P	I
EPSI	1	0	0	0	0	0	0
TECH	0	1	0	0	0	0	0
GHG	0	0	1	0	0	0	0
WC	0	0	0	1	0	0	0
Y	?	?	?	?	-	+	-
P	?	?	?	?	+	+	-
I	?	?	?	?	+	+	+

Figure A.8: Sign identification, macro block



Sources: Authors' calculation; Sample: 1990-2019.

Acknowledgements

We would like to thank Marek Jarocinski, Michele Lenza, Haroon Mumtaz, Miles Parker, and ECB's seminar participants for useful comments and suggestions.

The views expressed in this paper are of the authors only and do not necessarily reflect those of the European Central Bank or the Eurosystem.

Matteo Ciccarelli

European Central Bank, Frankfurt am Main, Germany; email: matteo.ciccarelli@ecb.europa.eu

Fulvia Marotta

Queen Mary University of London, London, United Kingdom; email: f.marotta@qmul.ac.uk

© European Central Bank, 2021

Postal address 60640 Frankfurt am Main, Germany

Telephone +49 69 1344 0

Website www.ecb.europa.eu

All rights reserved. Any reproduction, publication and reprint in the form of a different publication, whether printed or produced electronically, in whole or in part, is permitted only with the explicit written authorisation of the ECB or the authors.

This paper can be downloaded without charge from www.ecb.europa.eu, from the [Social Science Research Network electronic library](#) or from [RePEc: Research Papers in Economics](#). Information on all of the papers published in the ECB Working Paper Series can be found on the [ECB's website](#).

PDF

ISBN 978-92-899-4861-6

ISSN 1725-2806

doi:10.2866/971564

QB-AR-21-099-EN-N