

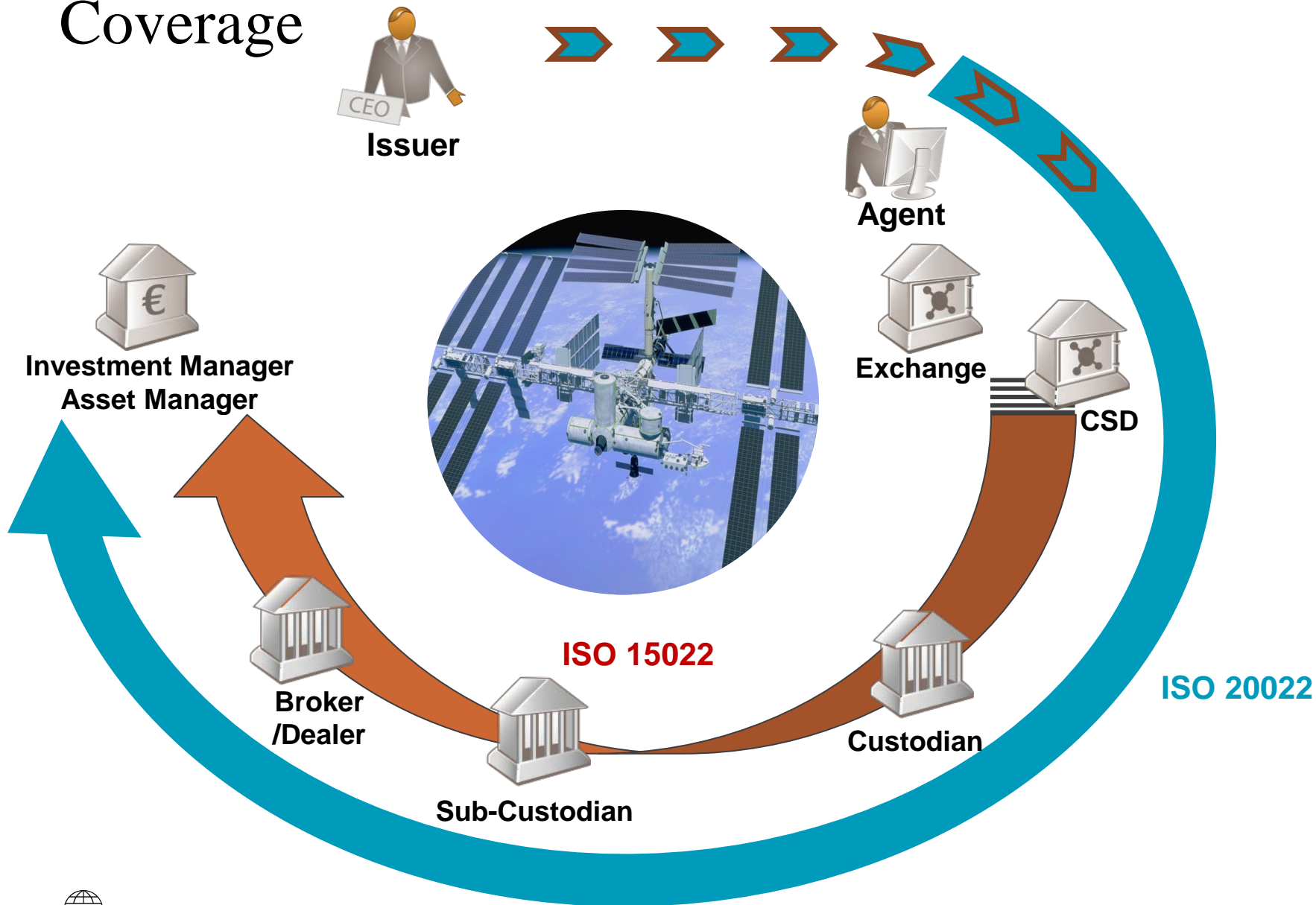


SWIFT Asset Servicing Messaging

*ISO15022 and ISO 20022 Corporate
Actions*

*January 16th 2018 - Fifth meeting of the AMI-SeCo HSG's Collateral Management
Harmonisation Task Force (CMH-TF)*

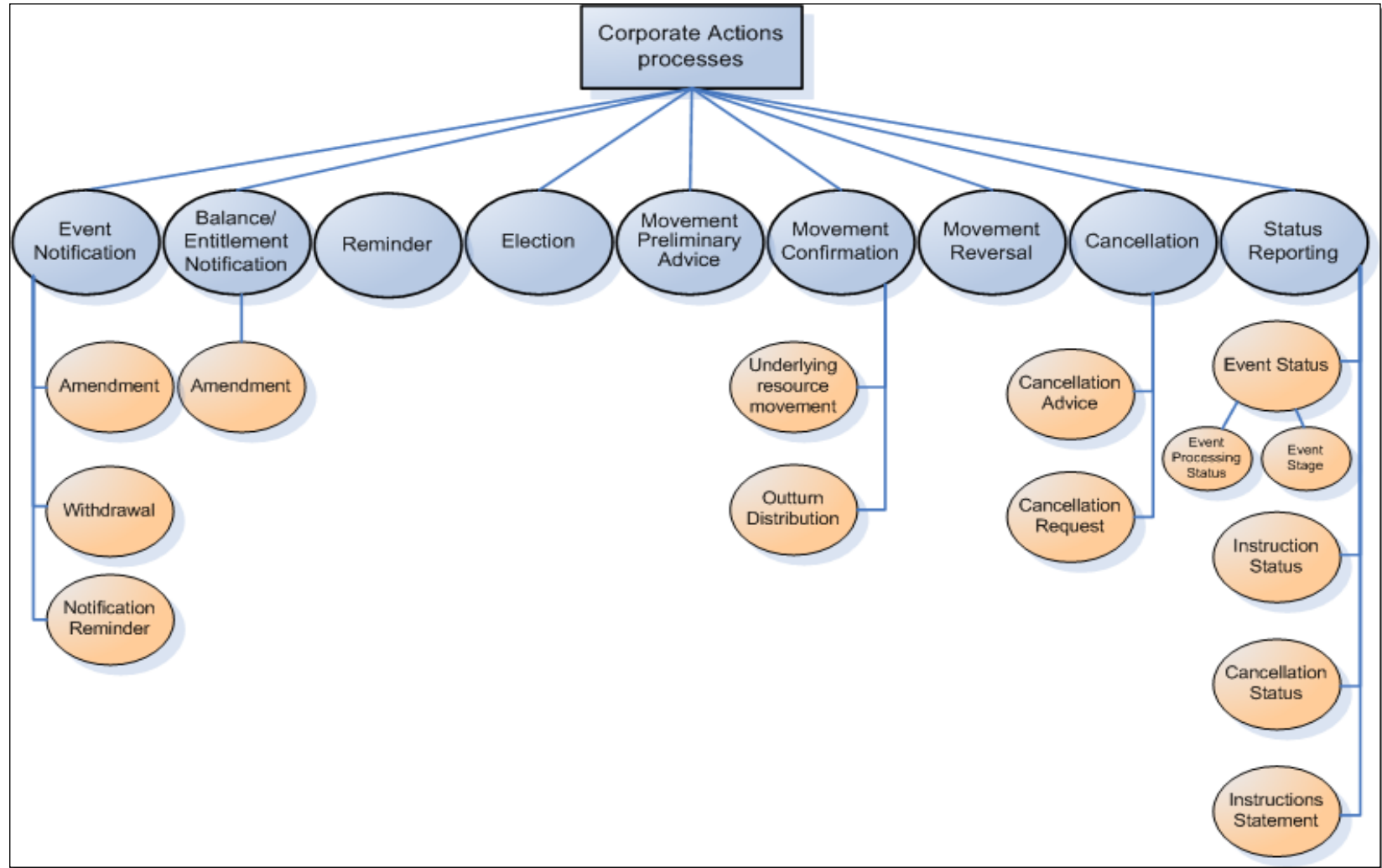
Corporate Actions – ISO15022 / ISO20022 Coverage



Corporate Actions Messages Coverage of Business Processes



Generic Business Processes

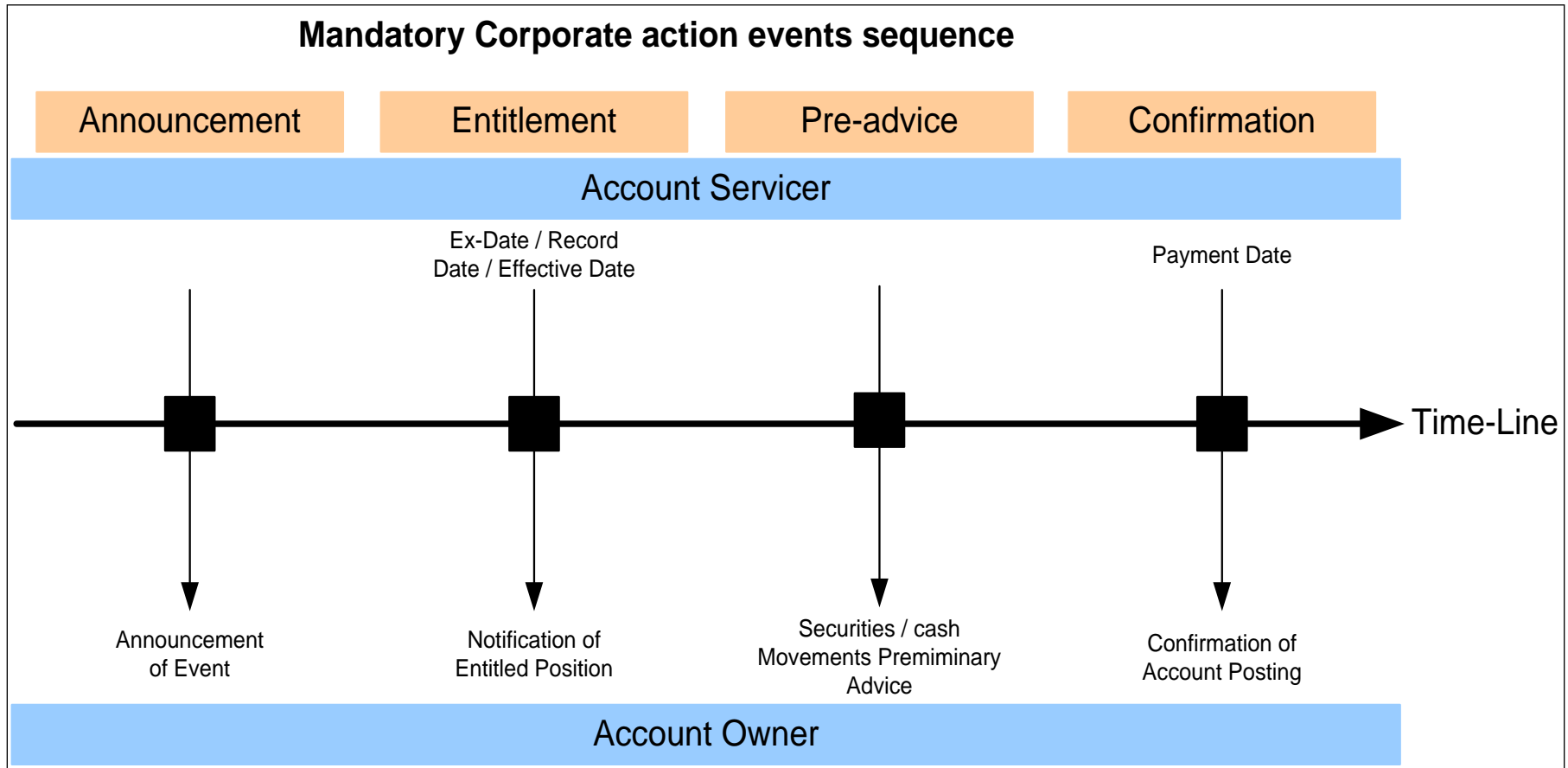


Corporate Actions Messages

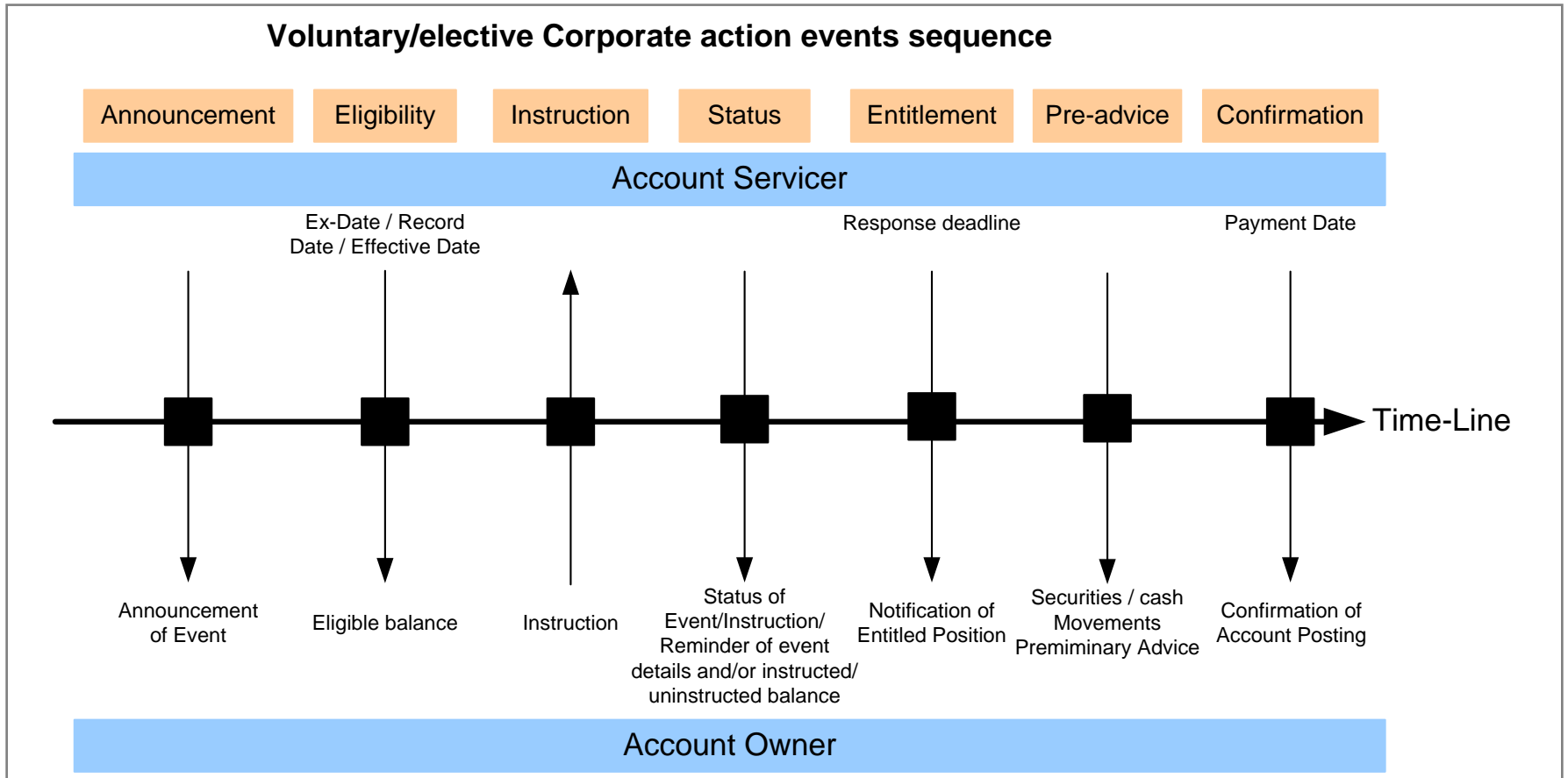
High Level Flows



Generic Corporate Actions Flows (1/2)



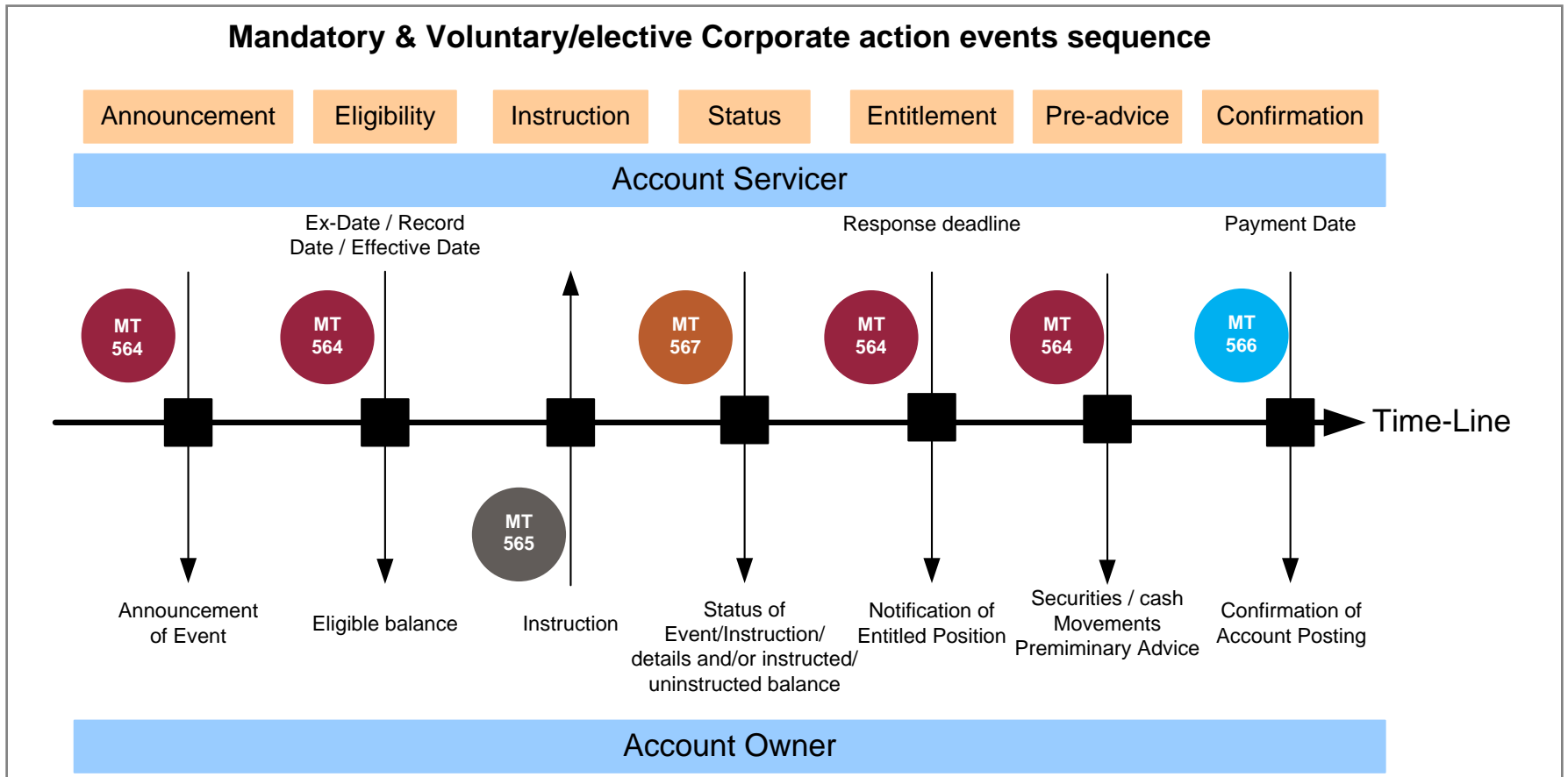
Generic Corporate Actions Flows (2/2)



ISO 15022 Corporate Actions Messages



Generic Corporate Actions Business Process Flows



Corporate Action – ISO 15022 Messages

CA JWG Compliant

MT 564

MT 565

MT 566

MT 567

MT 568

Corporate Action Notification

Corporate Action Instruction

Corporate Action Confirmation

Corporate Action Status and Processing Advice

Corporate Action Narrative instead of MT 599 Free Format Message

- Announcement
- Eligibility
- Entitlement
- Pre-advice of Payment

- Instruction

- Payment Confirmation

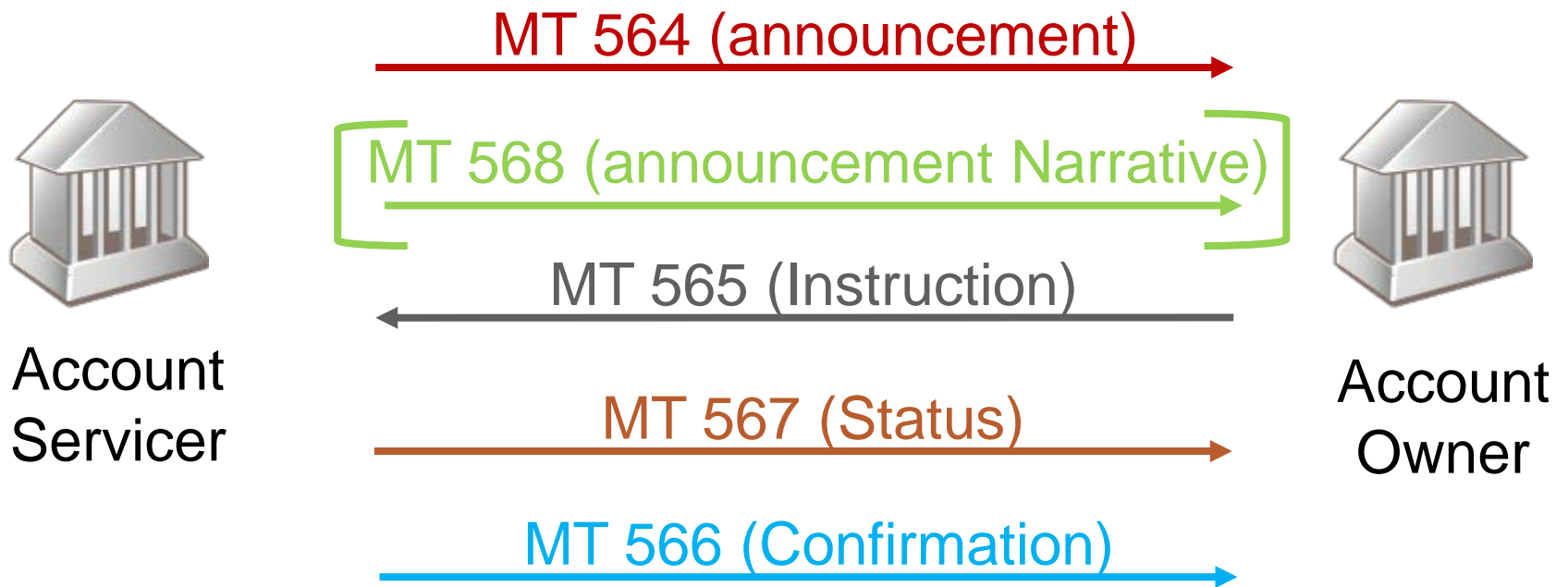
- Instruction Status
- Instruction Cancellation status
- Event processing Status



Hinders STP



MT 56x –Sequence of Messages - Plain Vanilla scenario



MT 564

Corporate Action Notification (2)

- Function of the Message -

23G Qualifier	Full Name	Definition
NEWM	New	New message.
REPL	Replacement	Message replacing a previously sent message.
REPE	Eligible Balance Notification	Message reporting an eligible balance that may or may not include an entitlement calculation or a revised entitlement calculation.
CANC	Cancellation Advice	Message to cancel a corporate action event previously announced by the account servicer or a previously sent Preliminary Advice of Payment message (:22F::ADDB//CAPA in sequence D).
WITH	Withdrawal	Message sent to void a previously sent notification due to the withdrawal of the event or offer by the issuer.
RMDR	Reminder	Message sent as a reminder of an event taking place.
ADDB	Additional Business Process	Message sent to notify an additional business process to a corporate action. Applicable for Market Claims, Tax Refund and Notification of Reversal



ISO 20022 Corporate Actions Messages



ISO 20022 Corporate Actions Messages

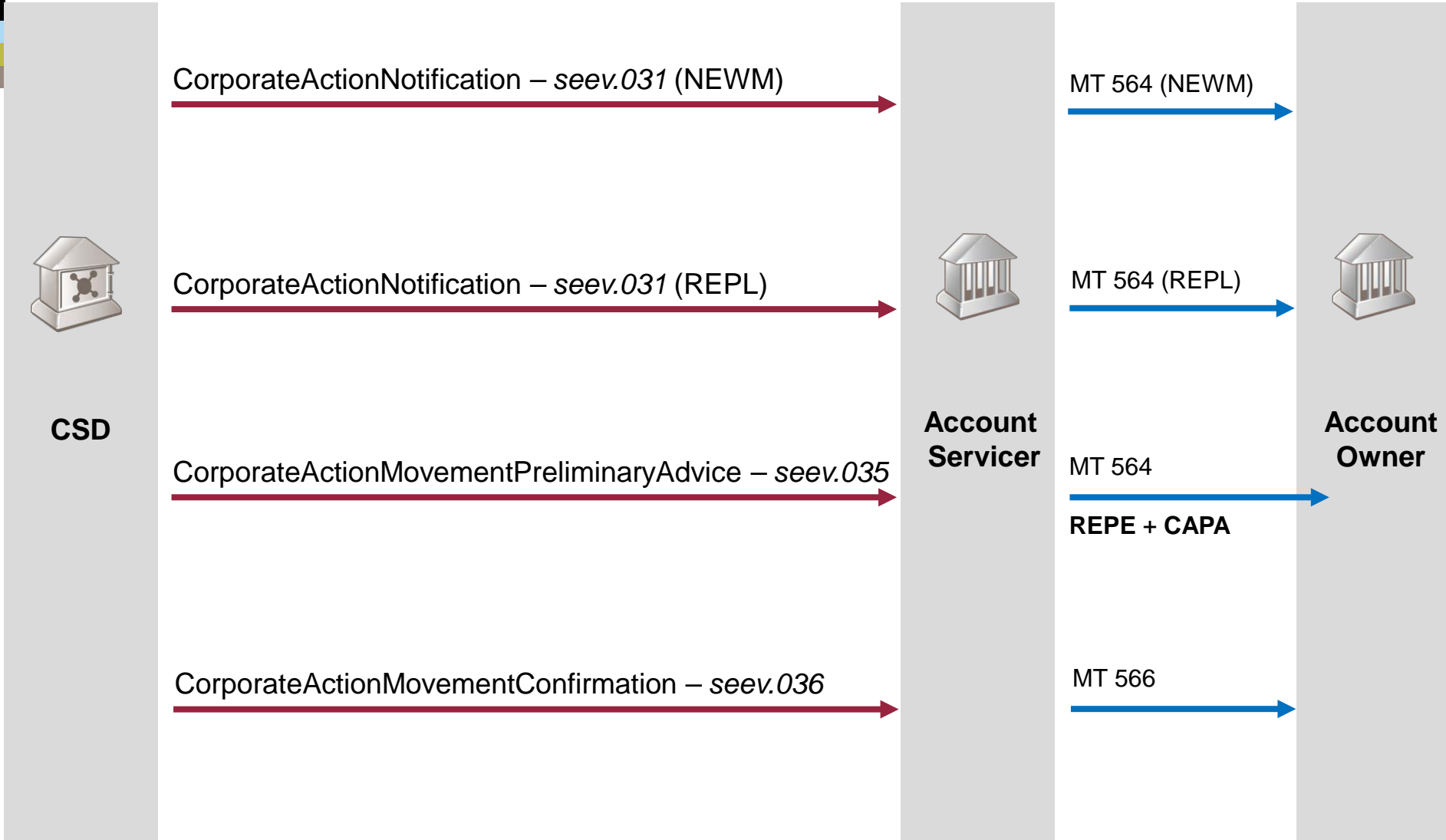
	MX Identifier	Proposed ISO 20022 Messages Names	Abbreviated Name	Equivalent ISO 15022 Messages
1	seev.031.002.01	Corporate Action Notification	CANO	MT564 (+MT568)
2	seev.033.002.01	Corporate Action Instruction	CAIN	MT565
3	seev.036.002.01	Corporate Action Movement Confirmation	CACO	MT566
4	seev.037.002.01	Corporate Action Movement Reversal Advice	CARE	MT566
5	seev.039.002.01	Corporate Action Cancellation Advice	CACN	MT564
6	seev.040.002.01	Corporate Action Instruction Cancellation Request	CAIC	MT565
7	seev.032.002.01	Corporate Action Event Processing Status Advice	CAPS	MT567
8	seev.034.002.01	Corporate Action Instruction Status Advice	CAIS	MT567
9	seev.041.002.01	Corporate Action Instruction Cancellation Request Status Advice	CACS	MT567
10	seev.035.002.01	Corporate Action Movement Preliminary Advice	CAPA	MT564
11	seev.038.002.01	Corporate Action Narrative	CANA	Stand-Alone MT 568 (Restricted Funct.)
12	seev.042.002.01	Corporate Action Instruction Statement Report	CAST	X
13	seev.044.002.01	Corporate Action Movement Preliminary Advice Cancellation Advice	CAPC	MT564

ISO 2022 Corporate Actions Messages

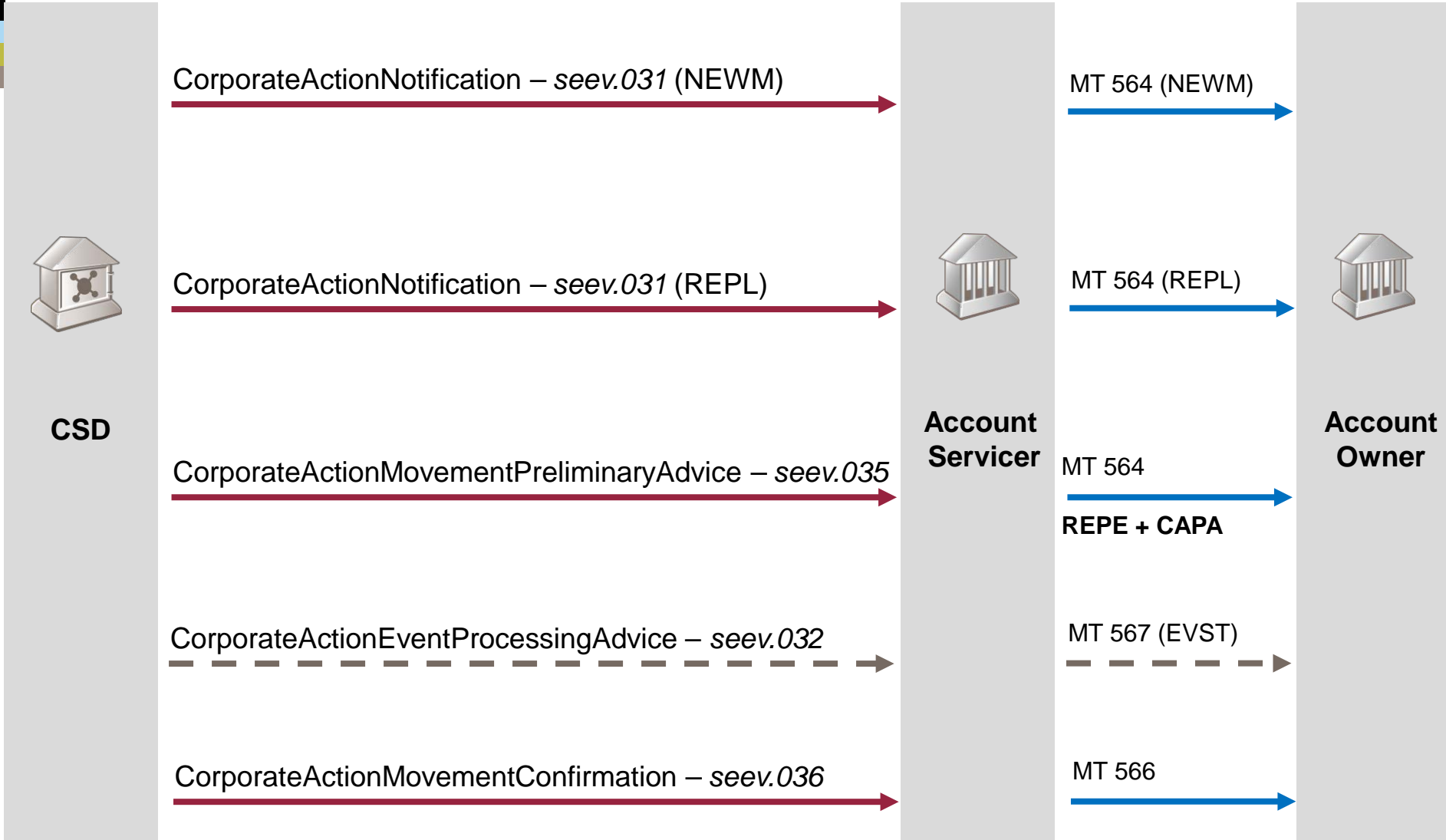
Detailed Flows



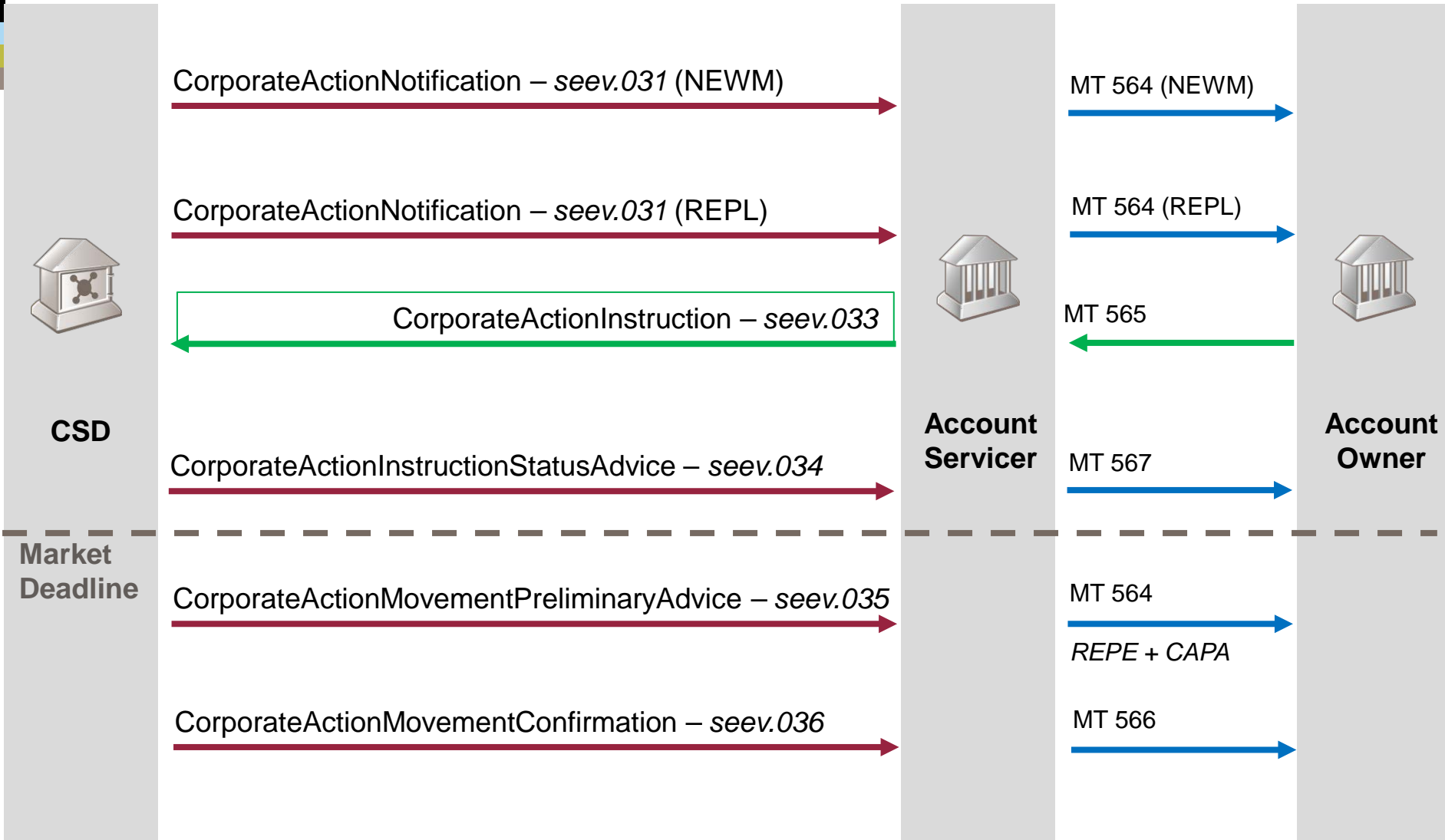
Mandatory events in ISO 20022 vs. ISO 15022 - Example 1 with Movement Pre-Advice



Mandatory events in ISO 20022 vs. ISO 15022 - Example 2 with delayed Payment



Voluntary Events or Mandatory w/options ISO 20022 vs. ISO 15022



Corporate Actions Flows

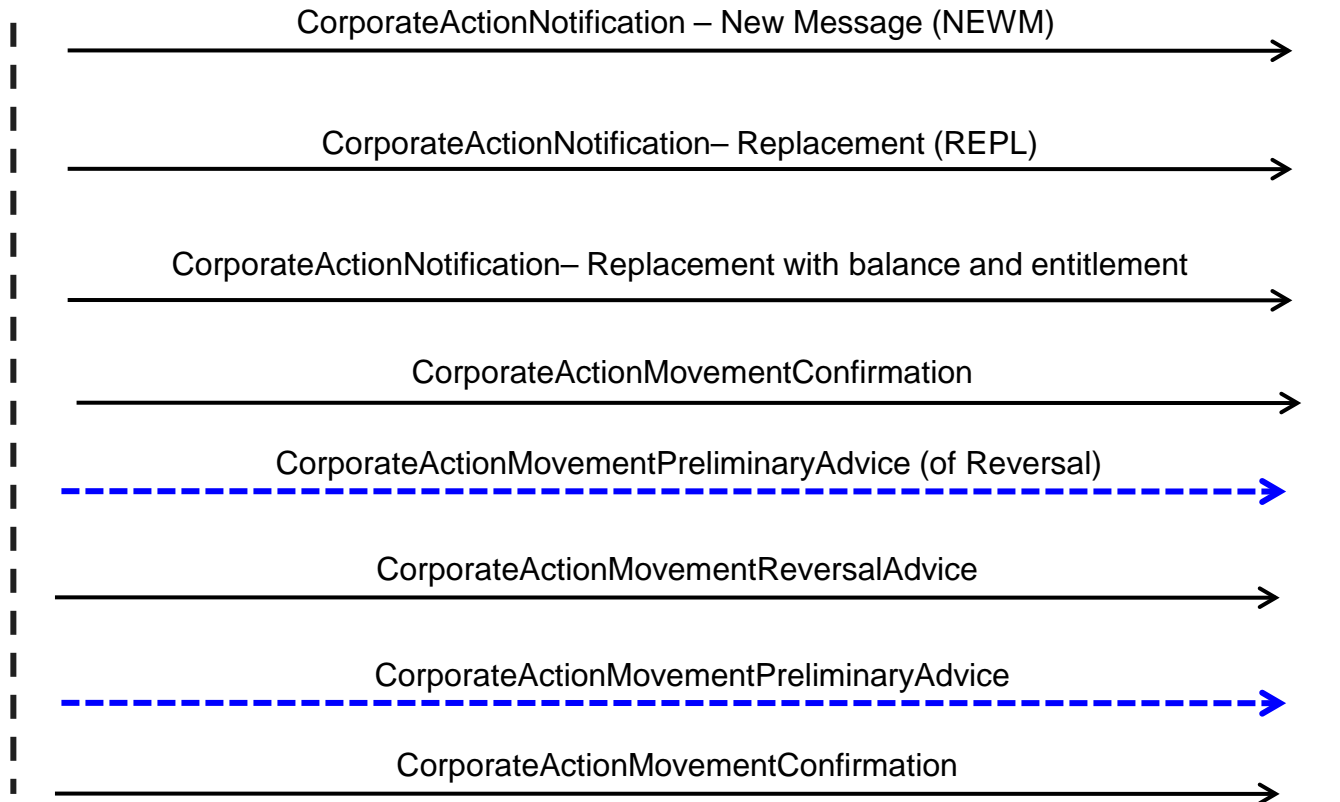
Generic flows - Non elective events with Pre-Advice and Reversal



Account Servicer



Account Owner



Corporate Actions Flows

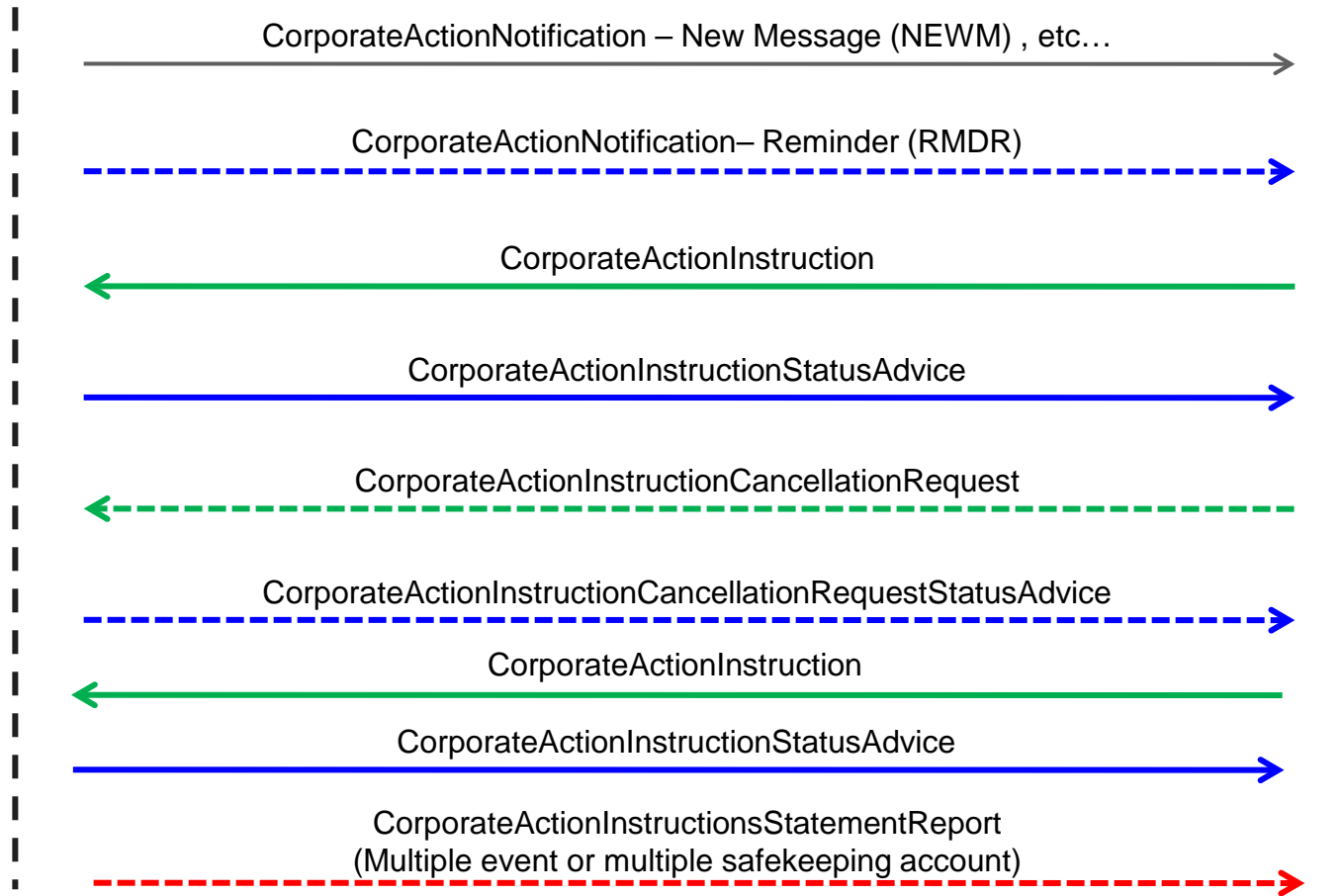
Election flows + Status and Instruction Statement



Account Servicer

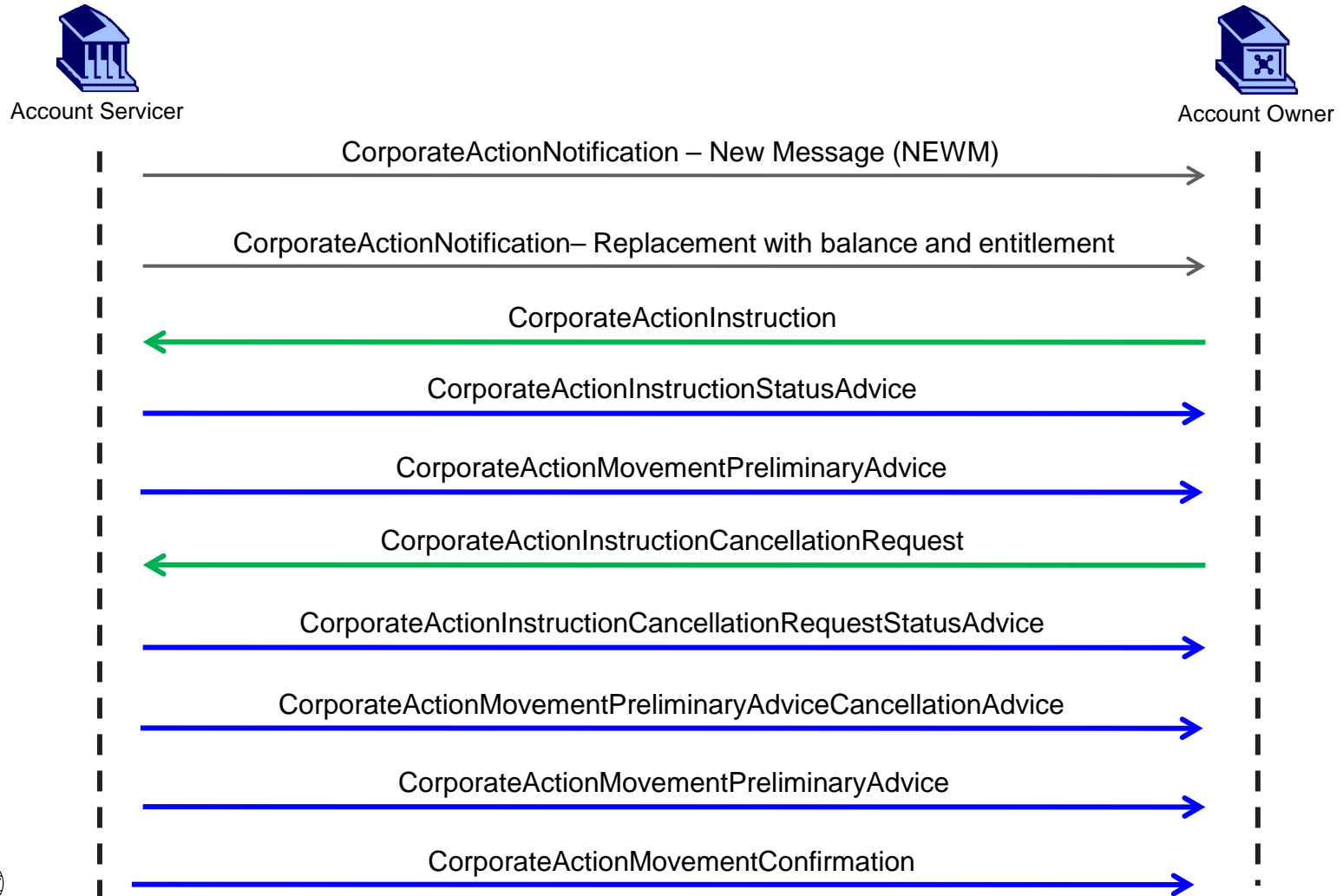


Account Owner



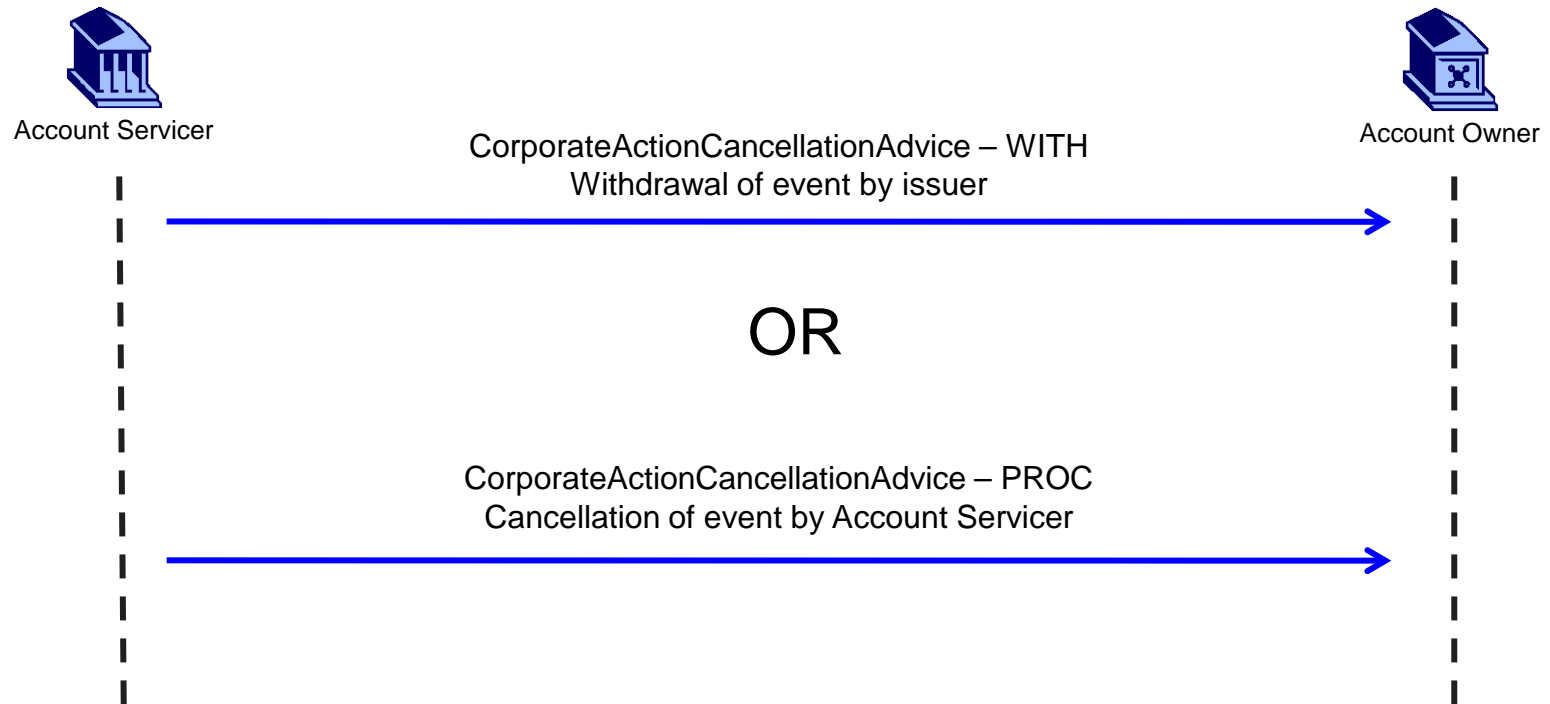
Corporate Actions Flows

Movement Preliminary Advice Cancellation flows



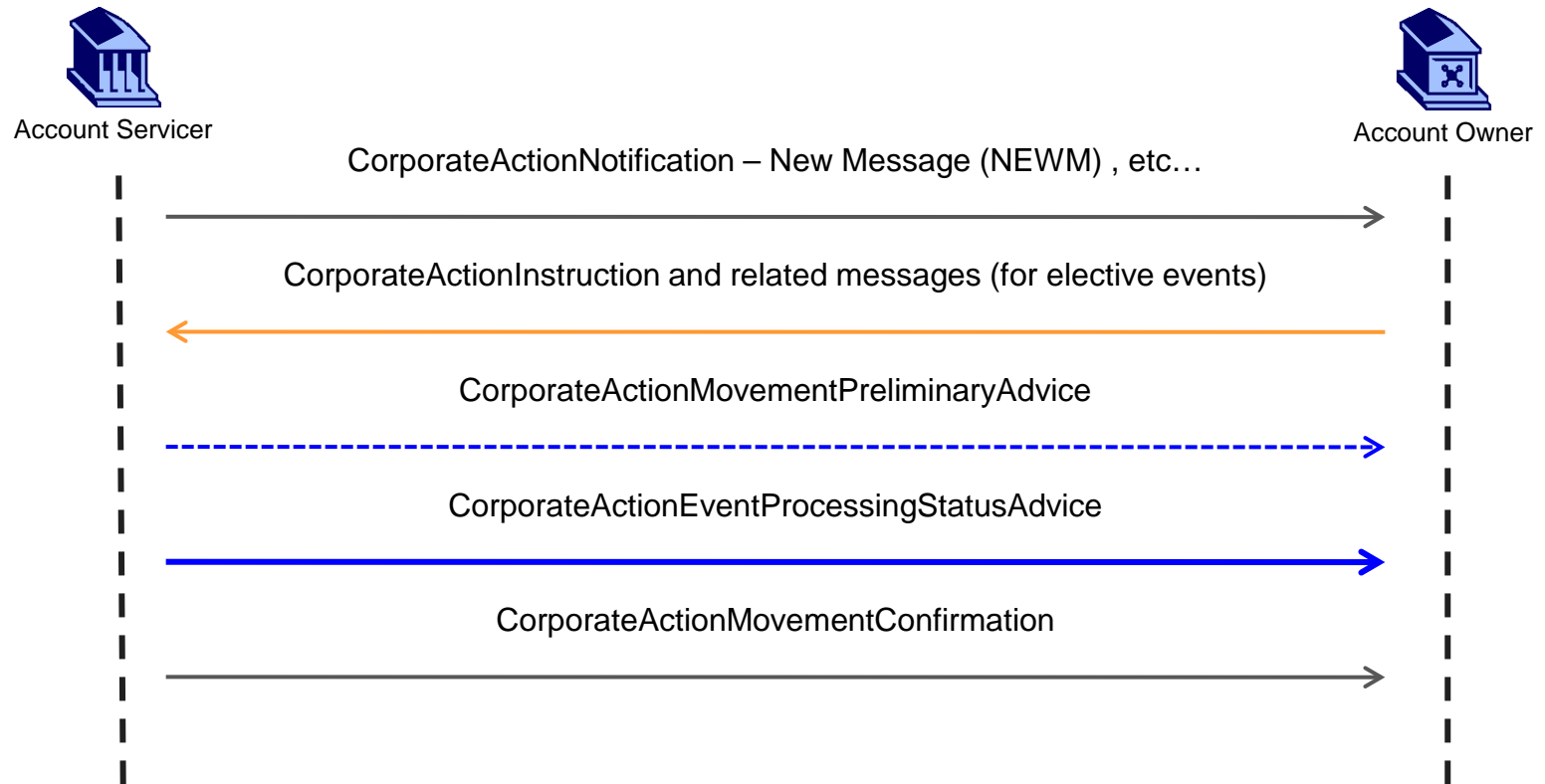
Corporate Actions Flows

Corporate Action Event Cancellation Process



Corporate Actions Flows

Corporate Action Event Processing Status Advice



Q & A

