

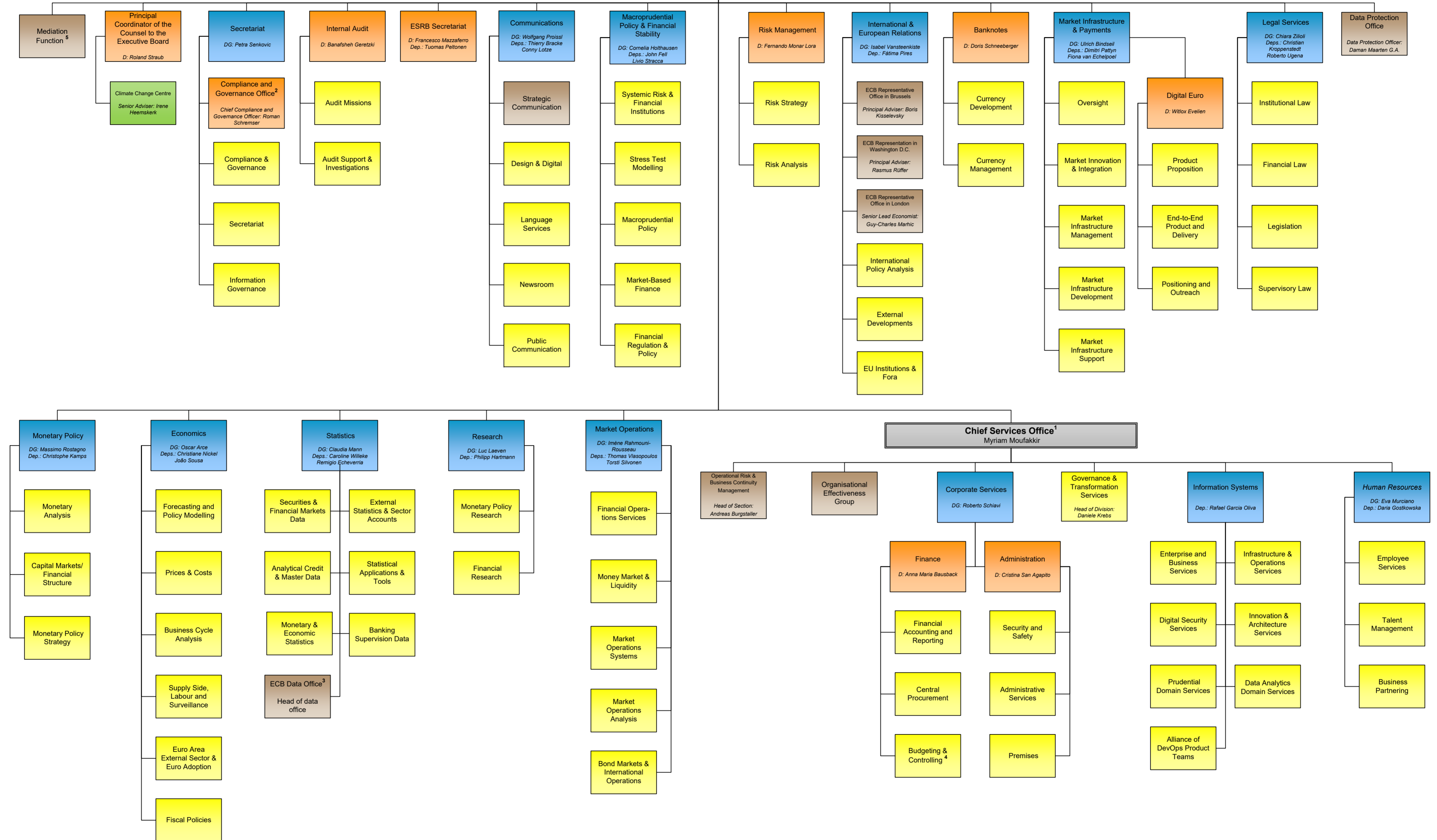
ECB Organigramme

Executive Board
Directorate General
Directorate
Division
Other Units
Centre

DG= Director General
 D= Director
 Dep./Depts.= Deputies

Reporting line

Executive Board
 Christine Lagarde - President
 Luis de Guindos - Vice President
 Piero Cipollone
 Frank Elderson
 Philip R. Lane
 Isabel Schnabel

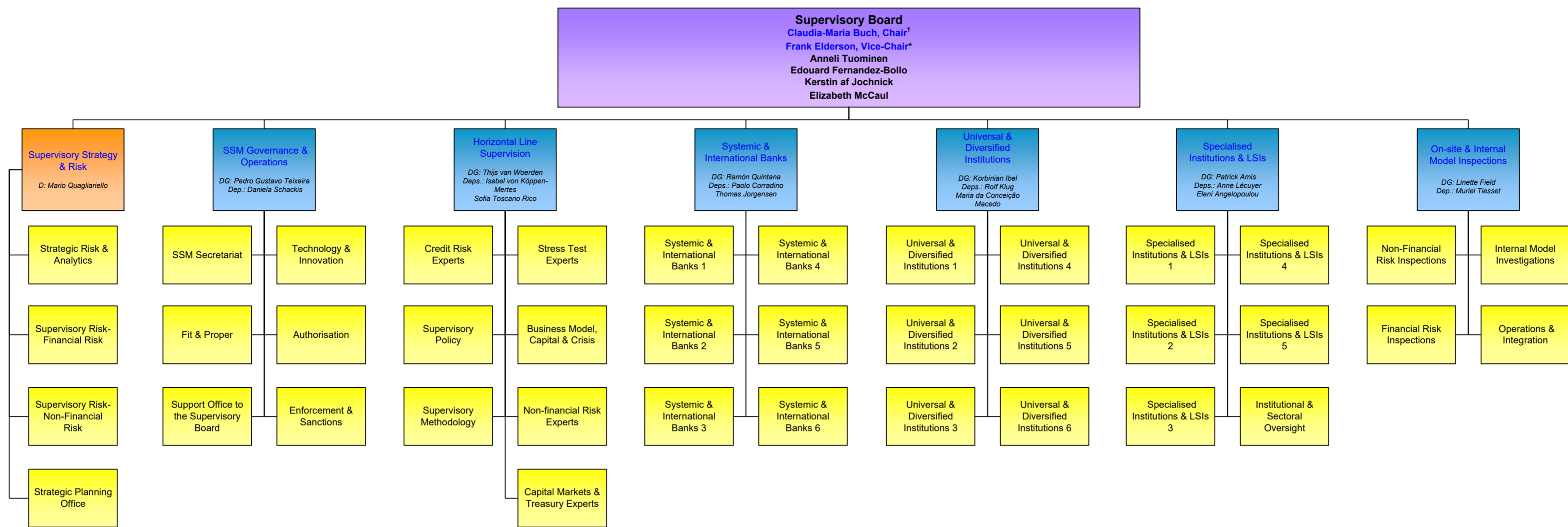


¹ The CSO reports to the Executive Board via the President
² On compliance-related matters the Chief Compliance and Governance Officer reports directly to the President
³ The Data Office reports to the Chief Data Officer, position assumed by DG Statistics
⁴ BCO will report via their senior management to Executive Board
⁵ The Mediator reports to the President in a non-hierarchical way

ECB Organigramme

Supervisory Board
Directorate General
Directorate
Division
Reporting line

DG= Director General
 D= Director
 Dep./Depts.= Deputies



*The Vice-Chair is chosen from among the members of the ECB's Executive Board
 †The Business Areas in blue report only to the Chair and Vice-Chair